

# Intergovernmental transfers and dynamic adjustment of subnational budgets\*

Alberto Porto      Jorge Puig      Bautista Vidal

First and preliminary version for discussion: August 2023

## Abstract

We study the dynamic impact of intergovernmental transfers on subnational budgets. Using the ideal case of a multi-level government like Argentina, and methods for dynamic analysis, we disentangled the nature of subnational fiscal adjustments that follow a shock in federal transfers. The results indicate that in the short-run, transfers increase spending more than proportionally and own revenues also increase, although to a small extent. Thus, a deficit is reached in the short-run. In the long-run, provinces recover fiscal equilibrium by adjusting spending to a level consistent with a balanced budget. The steady-state equilibrium involves a higher level of spending, as transfers increase endogenously as a result of cross-regional spillover effects. This result is robust to variations in the definition of subnational budgets. We also provide a discussion on potential mechanisms that may guide the dynamic of fiscal adjustments, and a relevant set of extensions that consider regional disparities and different types of taxes and spending used to balance subnational fiscal accounts. As a whole, the paper provides relevant insights for the design of subnational fiscal policy.

JEL CODES: D72, H11, H20, H50, H77

KEYWORDS: Intergovernmental transfers, subnational governments, dynamic adjustment, Argentina.

---

\*All authors belong to Center of Public Finance Studies (CEFIP), IIE-FCE, National University of La Plata (UNLP). Porto also belongs to National Academy of Economic Science of Argentina (ANCE). Puig also belongs to CEDLAS and Partnership for Economic Policy (PEP). The usual disclaimer applies. Email for contact: jorge.puig@econo.unlp.edu.ar (J. Puig).

# 1 Introduction

Intergovernmental transfers (henceforth transfers) play a central role in the theory of fiscal federalism. They provide flexibility to efficiently allocate spending and revenues between different levels of government (Oates, 1972).<sup>1</sup> As part of subnational financing, transfers interact and determine the additional sources of revenues (i.e., own tax revenues and debt) as well as subnational spending. In this paper, we study these interactions to answer *how do subnational governments, upon receiving a transfer from a higher level of government, adjust their fiscal balances?* The answers should help understand whether subnational governments decrease or not their own tax revenues and, in each case, through what type of taxes (e.g., direct or indirect taxation). In addition, the answers would shed light on how the politician modifies subnational spending and through what type of spending (e.g., current or capital spending). Here it is also relevant to determine if spending increases more or less than the transfer amount.

We provide answers to the above question using the case of a federal country like Argentina, widely studied in the literature (Prud'homme, 1995; Jones *et al.*, 2000; Porto & Sanguinetti, 2001; Goodspeed, 2002; Inman, 2003; Oates, 2005; Weingast, 2009; Vegh & Vuletin, 2015; Besfamille *et al.*, 2023). Several reasons make Argentina ideal to address the research question. First, Argentina's subnational governments (i.e., provinces) are embedded in extensive fiscal equalization mechanisms that combine, in a stylized manner, many of the relevant features observed in other countries.<sup>2</sup> Second, like many other countries, provinces play a key role in the global public sector performance and have been subject to a strong process of fiscal decentralization with a growing role of transfers during the last six decades. In the early 1960s, provinces executed 30 percent of total spending (i.e., consolidated) while collecting 16 percent of total taxes. Currently, they execute 42 percent of the spending while collecting 17 percent of total taxes (Porto & Puig, 2022). Third, like many other countries, provinces have access to indirect (i.e., on mobile factors, such as taxation on gross income) and direct (i.e., on immobile factors, such as taxation on property) taxation. Fourth, provinces have been playing an active and growing role in financing goods such as education, health and welfare programs. They have also remarkably gained relative

---

<sup>1</sup>For example, transfers compensate for vertical imbalances between different levels of government and horizontal ones between subnational units arising from different spending needs and/or tax capacities. Additionally, transfers compensate territorial externalities (e.g., spillovers from spending benefits or tax burdens into other jurisdictions) and can create incentives to achieve some target from the central government. On these issues, there is an important body of normative theory on the design of transfers. See, for example, Oates (1972); Ahmad (1997); Oates (1999, 2005); Martinez-Vazquez & Searle (2007); Vaillancourt & Bird (2007); Oates (2008); Boadway & Shah (2009).

<sup>2</sup>See Ahmad (1997); Martinez-Vazquez & Searle (2007); Blöchliger & Charbit (2008); Porto (2016); Radics *et al.* (2022).

participation in public employment that motivates a notable trend in the composition of provincial spending: capital spending accounted for nearly 45 percent of total current provincial spending in 1959, whereas in 2021 it represented only 10 percent (Porto & Puig, 2022). Fifth, provinces present remarkable heterogeneity in spending per capita, productive structure, urbanization, and social indicators (Porto, 2004).

Taking advantage of the aforementioned features we rely on an accounting approach regarding the subnational budget equation. We model the dynamics of fiscal variables using a Vector Error Correction Model (VEC). This approach, pioneered by Bohn (1991), allows us to study the relationship within cointegrated budget variables. We use panel data of fiscal variables for all 24 sub-national jurisdictions of Argentina covering the period 1988-2021. Although the approach and estimation methodology allow us to analyze changes in all variables of the subnational budget (e.g., spending, own revenues, transfers, etc.), we focus only on shocks to federal transfers.

Our results suggest that an exogenous increase in transfers rises government spending in the short-run. At the same time, own revenues also rise. This result on the revenue side is compatible with a crowding-in effect, as own revenues are increased at the same time the province receives more funds from the federal government. That is, we do not support the hypothesis of fiscal laziness. As government spending also rise, there is evidence of an ongoing fly-paper effect. In the long-run, public spending decreases, thereby allowing for a recovery of fiscal equilibrium. Transfers remain positive after the initial shock, which we show could be explained in part by the fact that in the “Coparticipación” regime, although grants themselves are exogenous to provinces, the common pool of taxes that is meant to be shared depends endogenously on the joint evolution of provincial economies in a context of fiscal multipliers. Finally, we found evidence that the bulk of the increase in government spending is carried out by current expenditures as opposed to capital ones. On the other hand, the surge in taxation comes at the expense of a more indirect tax structure. These results are aligned with the fiscal literature on different political incentives between variables with dissimilar degrees of public visibility (Rogoff, 1990; Sausgruber & Tyran, 2005; Vergne, 2009; Porto & Puig, 2022).

As a whole, the paper contributes to understanding how transfers interact with subnational tax revenues and spending, both in terms of level and structure. Also, to understanding how subnational governments adjust their budgets over time in the face of increased transfers. As we detail in Section 2, this connects our paper with the related literature on dynamic budget adjustments, which is especially relevant since there is not much evidence on the dynamics of the fiscal adjustments for subnational levels of government. Most of the literature focuses on local governments (Buettner & Wildasin, 2006; Buettner, 2009; Solé-Ollé & Sorribas-Navarro, 2012; Bessho

& Ogawa, 2015; Jaimes, 2020). In addition, although the “*level effects*” have been quite explored by the literature, less evidence is available on the “*composition effects*”. In this sense, the evidence is novel, and we believe that it constitutes an important issue since shifting the composition of the fiscal structure towards more indirect taxation and higher current spending can be problematic for economic welfare. We will further discuss these issues during the concluding remarks.

Finally, our paper contributes not only to comprehending the Argentine case but also to inform the discussion on subnational public finance in other countries. The paper becomes relevant in a context in which, for example, since the 1980s, almost all the countries of the Latin American and Caribbean (LAC) region have undertaken decentralization processes and assigned to subnational governments increasing responsibility in the provision of public goods and services. This led to the share of subnational governments in aggregate public spending almost doubling between 1985 and 2010, going from an average of 13 percent to 25 percent, later stabilizing and reaching 26 percent in 2019 (Radics *et al.*, 2022). On average, subnational governments in LAC spend 7.8 percent of GDP. Current (capital) expenditure amounts to 6.7 (1.1) percent. In two thirds of the OECD countries, decentralization processes led subnational governments to have a greater economic role, measured both as spending share of GDP and share of total public spending between 1995 and 2016 (OECD, 2019).<sup>3</sup> The dependence on transfers from subnational governments in LAC (56 percent) is higher than that registered in OECD countries and other developing regions, with the exception of Africa (Radics *et al.*, 2022). According to OECD *et al.* (2022), in 2018, subnational tax revenue as a percentage of GDP in OECD countries ranged between 5 percent and 13 percent, with an average of 9 percent. By comparison, in LAC, subnational tax revenues averaged 2.3 percent of GDP during 2015-2019. Subnational governments strongly rely on indirect taxation. For example, in Brazil, around 92 percent of tax revenue at the state level corresponds to the tax on the circulation of goods and services (Radics *et al.*, 2022).

The paper proceeds as follows. The paper’s contribution is contextualized and linked to pertinent strands of the literature in the next section. Section 3 describes basic background information of the Argentine case, emphasizing why it is an ideal case to answer our research question. Section 4 develops the analytical framework, while the methodology and data for the empirical analysis are described in Section 5. Section 6 presents the main findings while Section 7 discusses potential mechanisms that rationalize them. Some extensions that consider regional disparities and different types of taxes and expenditures used to balance subnational fiscal accounts are discussed in Section 8. The concluding remarks in Section 9 close the paper.

---

<sup>3</sup>As remarked by OECD (2019), the share of subnational governments in aggregate public in federal and quasi-federal countries such as Canada, Denmark, and Switzerland exceeds 50 percent of total government spending.

## 2 Related literature

This article contributes to a better understanding of the incentives generated by transfers on the behavior of subnational governments and the implications for global public sector performance (Prud'homme, 1995; Ahmad, 1997; Bird & Vaillancourt, 1999; Goodspeed, 2002; Lago *et al.*, 2024). Within this topic we believe that the paper is related to three strands of literature.

First, our paper contributes to a literature that analyzes the dynamics of subnational fiscal adjustments within the framework of Vector Error Correction Models. Buettner & Wildasin (2006) and Buettner (2009) were the first studies that implemented VEC analysis for studying the joint evolution of fiscal variables in panel data. These seminal papers study the case of U.S. and German municipalities, respectively. These contributions were followed by Solé-Ollé & Sorribas-Navarro (2012) for Spanish municipalities, Bessho & Ogawa (2015) for the Japanese ones, and Jaimes (2020) for the Colombian ones. As it is readily apparent, all previous work has been done in the case of municipalities. This approach allows the authors to analyze panels with a vast number of units, which goes from the 256 municipalities of Solé-Ollé & Sorribas-Navarro (2012) to the 3210 analyzed in Bessho & Ogawa (2015). We carry out the first research at the provincial level that makes use of these tools.

Secondly, our paper relates to a strand of literature that analyzes how transfers interact with subnational tax revenues and spending. Normative theory suggests that in a welfare maximization model transfers substitute subnational tax revenues if the transfer elasticity of public and private goods is positive (Bradford & Oates, 1971).<sup>4</sup> Additionally, the second-generation theory of fiscal federalism (Weingast, 1995, 2009; Oates, 2005) highlights several perverse incentives of transfers.<sup>5</sup> However, the overall empirical evidence is somewhat mixed Lago *et al.* (2024). Some studies support the idea of crowding-out effects (Zhuravskaya, 2000; Buettner & Wildasin, 2006; Mogues & Benin, 2012; Taiwo, 2022), while others support the idea of complementarity between transfers and own tax revenues (Skidmore, 1999; Dahlberg *et al.*, 2008; Ferede, 2017; Lewis &

---

<sup>4</sup>The normative model of Bradford & Oates (1971) predicts that an unconditional transfer to a community is equivalent to a set of transfers to members of the community for the same total amount, with individual participation being equal to their participation in the collection of local taxes. Thus, transfers and own revenues are perfect substitutes, and the line of consumption-income coincides with that of consumption-transfers.

<sup>5</sup>First, they can generate irresponsible behavior of recipient governments (e.g., excessive expenditure, tax laziness, soft budget constraint -Kornai (1986); Qian & Roland (1998)-, indebtedness). Second, the central or subnational government can depart from the normative theory of transfers by incorporating political criteria and use transfers to create financial and political dependence on local governments (Bennett & Mayberry, 1979; Holcombe & Zardkoohi, 1981; Porto & Sanguinetti, 2001; Weingast, 2009).

Smoke, 2017; Masaki, 2018).

Regarding how transfers can affect local revenue composition, theoretical arguments suggest that transfers induce more or less indirect taxation depending on whether distributional or allocative criteria prevail (Holm-Hadulla, 2020). In the presence of high mobility of economic agents, the literature suggests that lower-tier governments should rely on less taxation to avoid altering the spatial allocation of economic activity (Oates, 1972; Zodrow & Mieszkowski, 1986; Oates & Schwab, 1988; Wildasin, 1989). Political reasons for relying on different types of taxation also depend on their political cost. Hettich & Winer (1984, 1999) show that politicians choose tax structures to minimize those costs. Thus, for example, there may be political reasons for relying on indirect taxation, usually less visible, even when less direct taxes are available, and vice versa (Borck, 2003). As Chetty *et al.* (2009) state, there is a longstanding theoretical literature on “fiscal illusion” which discusses how the lack of visibility of tax rates may affect voting behavior and the size of government (Mill, 1848; Sausgruber & Tyran, 2005). The evidence provided by our paper on the composition of subnational resources can be adequately rationalized with these arguments based on political reasons and becomes relevant given that the empirical literature on the tax policy incentives of transfers is relatively scarce (Buettner & Krause, 2021).

Finally, our paper is also related to the literature on the *flypaper effect*, originally introduced in the late 1960s (Henderson, 1968; Gramlich, 1969). Funds from transfers tend to be used by subnational governments for public spending rather than for tax relief. This translates into transfers having a much larger stimulating effect on subnational government spending than an equivalent change in private income (Lago *et al.*, 2024). The existence of this effect has been extensively documented across countries, including Argentina (Bradford & Oates, 1971; Hines & Thaler, 1995; Bailey & Connolly, 1998; Vegh & Vuletin, 2015; Becker *et al.*, 2020; Besfamille *et al.*, 2023). For example, using an empirical analysis of Argentine provinces for the period 1963–2006, Vegh & Vuletin (2015) find that provincial governments increase public spending by around 1.65 due to a unitary increase in transfers.<sup>6</sup> Additionally, and probably because it isn’t the paper’s primary goal, this contribution is silent about what type of spending increases and how the extra 0.65 is financed (e.g., do provinces increase their own revenues by 0.65?). Additionally, based on the fiscal regime that prevailed in Argentina from 1988 to 2003, Besfamille *et al.* (2023) estimate that from a unitary increase in transfers, provinces spend 0.98 on public consumption<sup>7</sup> and decrease their debt by 0.33. However, the authors do not explore what happens with capital spending,

---

<sup>6</sup>Vegh & Vuletin (2015) use a definition of total spending that includes current and capital.

<sup>7</sup>Besfamille *et al.* (2023) subtract interest payments from current public expenditure to create the new variable provincial public expenditure. This new variable includes payroll, procurement, and transfers to the public and private sectors, but it excludes public investment and interest payments.

nor what explicitly happens with subnational tax revenues.<sup>8</sup> Based on these gaps and although our paper does not deal with public debt issues, we understand that it may be useful to further advance on how both sides of the budget react to transfers.

The aforementioned VEC model literature has provided further evidence of flypaper effects, this time taking into account dynamic budget responses. Results pointing to the presence of a flypaper effect were obtained for Japan municipalities; an increment in grants by one yen was estimated to be followed by a surge of 58 cents in expenditures and a not significant response of 1 cent in own revenues. Results from other studies at the municipal level do not differ qualitatively: expenditure increases are significantly bigger than tax reductions, which are often not significant at all, the only exception being USA municipalities. Increment in spending was estimated to be of 36 cents for Colombia and Germany, 29 cents for Spain and 34 cents for USA. However, we should keep in mind that existing studies using this VEC approach are concerned with municipalities' finances rather than those of upper-level government entities.

### 3 Subnational governments of Argentina

Argentina is a federal constitutional republic and representative democracy.<sup>9</sup> Each province has the constitutional power to run an autonomous fiscal policy. The size of the overall government, measured by the ratio of consolidated government expenditure to GDP, is around 40 percent. Government spending is highly decentralized; on average, provinces are responsible for about 40 percent of consolidated government expenditure. On the other hand, tax collection is highly centralized at the federal level (i.e., national government). These vertical imbalances are financed by a system of transfers from the national government which represent, on average, about 50 percent of provincial expenditure.

The most important component of transfers (about 60 percent) is based on a tax-sharing law called “Coparticipación”, which dates from 1935. This law established: (i) the taxes to be shared (most direct and indirect domestic taxes), (ii) how shared tax collection would be distributed between the national government and provinces (i.e., primary distribution), and (iii) how provincial funds would be distributed among provinces (i.e., secondary distribution). It is important to note that these transfers from federally-collected taxes to provinces are unconditional

---

<sup>8</sup>Note that as the debt is reduced, own tax revenues should increase if the three sources of financing expenditure are own tax revenues, transfers, and debt.

<sup>9</sup>Much of this section follows [Porto \(2004\)](#), [Vegh & Vuletin \(2015\)](#), and [Porto & Puig \(2023\)](#).

(and automatic) in the sense that, by law, provinces are entitled to them based on their mere existence. Periodically, typically every ten years to allow the system to adjust, new modifying laws were enacted to regulate the primary and secondary distribution of funds. The tax-sharing law established that secondary shares were to be determined using formulas that weighed various time-varying indicators such as each province’s contribution to total tax collection (proxied by population), cost of providing public goods (proxied by population density), and redistributive considerations favoring low-income provinces. Since 1988, primary distribution coefficients have not changed, and secondary distribution coefficients have been fixed and not determined by any explicit formula. The law in force since then is 23548.

As in many other developing countries, population and production are highly concentrated in a few provinces. When excluding the Autonomous City of Buenos Aires (CABA), four provinces (Buenos Aires, Cordoba, Santa Fe, and Mendoza) account for 60 percent of the total population (column 1, Table A1-Appendix). Also, more than half of Argentina’s income is concentrated in those four provinces, and just one province (Buenos Aires) accounts for about 33 percent of the country’s output (column 2, Table A1-Appendix). The remaining 19 provinces (i.e., more than 80 percent of the total number of provinces) are typically sparsely populated and show a very high degree of heterogeneity in many aspects (e.g., levels of income per capita, productive structure, economic development, and social indicators). Some provinces like Chaco, Formosa, Misiones, and Santiago del Estero have had, historically, a per capita income of about half of the national average (column 3, Table A1-Appendix). In contrast, some provinces like Neuquén, Santa Cruz, and Tierra del Fuego have the highest income per capita, of about twice the national average (column 3, Table A1-Appendix).

Provinces spent around 15 percent of their geographic gross product (GGP<sup>10</sup>) in 1988, while in 2021 they spent well above 20 percent of GGP (Figure 1). Provinces have been playing an active and growing role in financing goods such as education, health and welfare programs. Provincial own tax revenues were slightly above 2 percent of GGP in 1988 while in 2021 it was close to 5 percent. Briefly, the provinces collect four taxes, two on economic activity (i.e., indirect taxation on goods and services with more elastic tax bases, in the form of a turnover tax on gross income and a less significant stamp tax), and two on people’s assets (i.e., direct taxation on stocks with more inelastic tax bases in the form of a property tax and an automobile tax). The former are relatively more distortionary than the latter given that this type of turnover tax generates the well-known “cascading” effect.<sup>11</sup> Transfers from the national government rose from 10 percent of

---

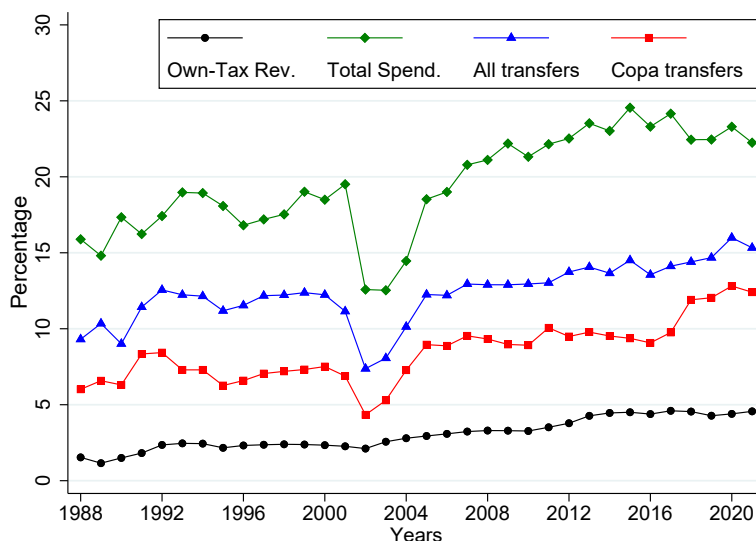
<sup>10</sup>Note that GGP differs from GDP. The first refers to the geographic gross product of each province (i.e., provincial income). The second refers to the country’s gross product (i.e., national income).

<sup>11</sup>Also, this type of turnover tax introduces distortions in relative prices that favor the most integrated sectors



GGP to 15 percent between 1988 and 2021.

**Figure 1:** Main fiscal variables of subnational governments of Argentina. Evolution 1988-2021. Variables expressed as a share of geographic gross product (GGP). In percentage



*Source:* Author’s elaboration based on the sources detailed in Subsection 5.2. *Notes:* Own tax revenues include only the provincial current tax revenues. Thus, Non-tax revenues (i.e., royalties), capital revenues, and indebtedness are not included in this definition.

The Argentine provinces present notable trends in the composition of provincial own tax revenues and spending. On the one hand, the share of own tax revenues collected through indirect taxation (i.e., turnover tax on gross income<sup>12</sup>) has been increasing in the last decades, from 60 percent to nearly 80 percent (Figure 2, Panel A).<sup>13</sup> For example, in the case of the province of Buenos Aires, when it was originally introduced in 1984, the general rate of the turnover tax was 0.4 percent. Currently, this rate is around 4 percent (Porto, 2019). A similar pattern has prevailed in the rest of the provinces. On the other hand, the evolution of capital spending composition is

---

and can consequently induce an “artificial” integration of activities. These kinds of effects can especially affect the competitiveness of locally produced traded goods, either because in export they cannot fully recover the taxes imposed locally or because in import they face goods that come from countries with neutral tax schemes that liberate indirect tax burden on exportable products (Keen, 2014).

<sup>12</sup>The antecedent of this tax is the Alcavala: it was a transaction tax that financed local expenses and was collected in the cities where internal customs operated (Cortés Conde, 2012). This type of tax was collected in Spain and was later established in the Colonies. The distorting effects were noted by Adam Smith, who suggested that the greater prosperity of Great Britain compared to Spain and the generally low state of development of manufacturing in Spain in the eighteenth century was attributable in considerable part to the burden of that tax (Mikesell, 2007).

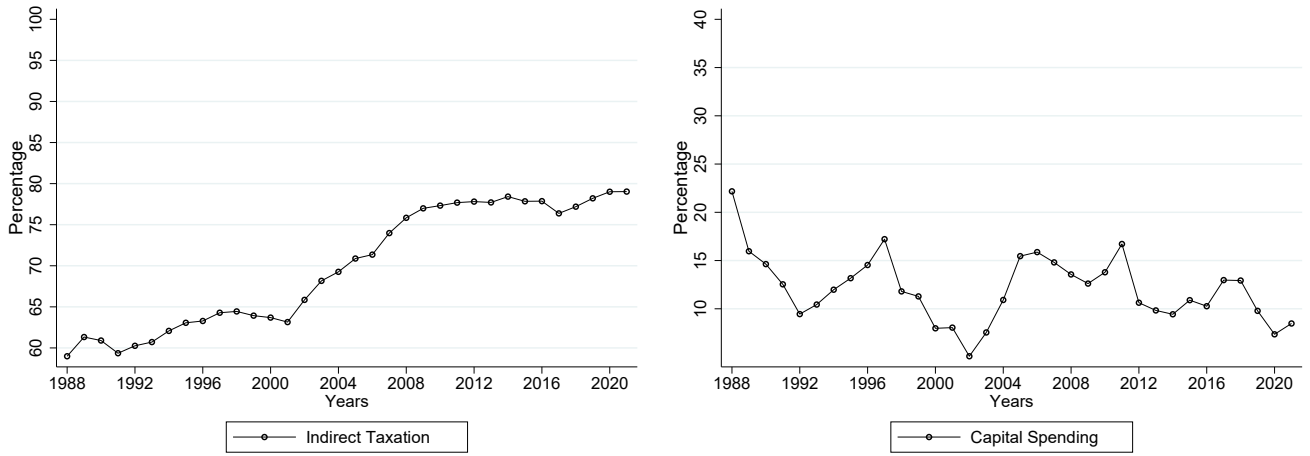
<sup>13</sup>On the flip side, the share of property taxes has been reduced. For a detailed analysis of this evolution see Porto *et al.* (2014).

no less interesting: in 1988, it accounted for nearly 25 percent of total provincial current spending, whereas in 2021 it represented only 10 percent -on average- (Figure 2, Panel B).

**Figure 2:** Trends in the composition of own tax revenues and public spending. Argentine provinces. Evolution 1988-2021. In percentage

Panel A. Own revenues: share of indirect taxes

Panel B. Spending: share of capital spending



Source: Author's elaboration based on the sources detailed in Subsection 5.2. Notes: Panel A measures the share of own tax revenues collected through indirect taxation (i.e., turn-over tax) over total own tax revenues. Panel B measures the share of capital spending over current spending.

## 4 Analytical framework

Our analytical framework follows the standard VEC literature, which is based on an accounting approach regarding the subnational budget equation that can be defined as follows:

$$B_t \equiv G_t - R_t - T_t + (1 + r)B_{t-1} \quad (1)$$

where  $G_t$  denotes expenditures,  $R_t$  represents own revenues and  $T_t$  indicates transfers.  $B_t$  is the level of debt subject to a constant interest rate  $r$ . By expressing the debt services as  $S_t = rB_{t-1}$  we can define the subnational deficit ( $D_t$ ), which is equal to the change in the level of debt between periods, as follows:

$$D_t \equiv B_t - B_{t-1} = G_t - R_t - T_t + S_t \quad (2)$$

An expression that links today's debt level with the present value of both tomorrow's debt and fiscal surplus can be defined through the following equation:

$$B_t = \frac{B_{t+1}}{1 + r} + \frac{R_{t+1} + T_{t+1} - G_{t+1}}{1 + r} \quad (3)$$

By iterative substitution and assuming that the transversality condition holds, the following equation 4 can be derived to establish that fiscal shocks at moment  $t$  (e.g., a change in  $T_t$ , as our paper is interested in transfer shocks) will be corrected in present value to allow the transversality condition to hold.

$$B_{t-1}(1+r) = \sum_{j=0}^{\infty} \frac{R_{t+j} + T_{t+j} - G_{t+j}}{(1+r)^j} = \sum_{j=0}^{\infty} \frac{Surplus_{t+j}}{(1+r)^j} \quad (4)$$

Trehan & Walsh (1988) show that imposing the transversality condition is the same as holding that the deficit (including interest payments) is stationary. So,  $G_t$ ,  $R_t$ ,  $T_t$ , and  $S_t$  should be cointegrated with a known cointegration vector  $(1, -1, -1, 1)$ .

## 5 Methodology and data

### 5.1 Methodology

We model the dynamics of fiscal variables using a Vector Error Correction Model (VEC). This approach, pioneered by Bohn (1991), allows us to study the relationship within cointegrated budget variables. Let  $Y_t$  be a column vector containing all four fiscal aggregates:  $Y_t = (G_t, R_t, T_t, S_t)'$ . By defining a column vector  $b = (1, -1, -1, 1)'$ , the fiscal deficit  $D_t$  can be expressed as  $D_t = b'Y_t$ . Note that  $b$  is suspected to be the cointegration vector of the variables contained in  $Y_t$ . In this setting, a VEC model characterizing the relation between the variables (supposed to be cointegrated) is given by the system of four equations:

$$\Delta Y_t = \gamma D_{t-1} + A_1 \Delta Y_{t-1} + A_2 \Delta Y_{t-2} + \dots + A_k \Delta Y_{t-k} + \epsilon_t \quad (5)$$

The column vector  $\epsilon_t$  contains the stochastic shocks related to all four variables. We will suppose, for now, that all four different types of shocks are uncorrelated. Thus, we could think of these shocks as exogenous and analyze the endogenous response of  $G_t, R_t, T_t, S_t$  to them. The 4x1 vector  $\gamma$  captures the short-run adjustments responsible for allowing the system to return to equilibrium after an exogenous shock to its variables.<sup>14</sup> By recursive substitution, the VEC model can be re-expressed into a Moving Average (MA) model depending only on contemporaneous and lagged exogenous shocks ( $\epsilon_t$ ). By doing this, we can obtain the changes in variables in response to shocks by computing the impulse-response functions (IRFs) inherent to the system.<sup>15</sup>

---

<sup>14</sup>For example, if the fiscal deficit were to rise by a certain quantity, we would expect expenditure-side variables to lower and income-side variables to increase.

<sup>15</sup>Their analytical nature is discussed in Appendix A2.

The parameters used to derive the impulse response functions must be estimated using econometric methods. Notice that, in comparison with regular VEC models, we do not need to estimate the cointegration relation parameters as they are known by theory. So, we performed an OLS estimation of each equation in 5 to retrieve the remaining parameters. Estimates are consistent even if shocks at any given time are correlated among themselves, which is the case when there are contemporary relationships between variables, as discussed below.

Most of previous literature assumes that the stochastic terms in the model’s equations are contemporaneously uncorrelated.<sup>16</sup> However, this approach has several limitations, as there is no reason for variables not to have contemporaneous relations.<sup>17</sup> With that in mind, we could re-express our model by adding a matrix of contemporaneous relations  $A_0$  (i.e., structural VEC):

$$A_0\Delta Y_t = \gamma D_{t-1} + A_1\Delta Y_{t-1} + A_2\Delta Y_{t-2} + \dots + A_k\Delta Y_{t-k} + \epsilon_t \quad (6)$$

where  $\epsilon_t$  are truly independent variables.<sup>18</sup> In this setting,  $\frac{\partial \Delta Y_t}{\partial \epsilon_t} = A_0^{-1}$ : one shock in a particular variable affects the others instantaneously. Because of simultaneous equations bias the matrix  $A_0$  cannot be directly estimated by adding all dependent variables at time  $t$  as regressors. Thus, we need to make an assumption about the order in which variables affect themselves at present time in order to recover structural IRFs (i.e., Cholesky decomposition approach).

As  $T_t$  depend to a large degree on features that are external to individual provinces (Porto & Sanguinetti, 2001; Vegh & Vuletin, 2015; Besfamille *et al.*, 2023), we treat it as the least responsive variable to contemporaneous changes in other variables. Thus, we think this variable as affecting the remaining ones contemporaneously while not being affected contemporaneously by them. In contrast,  $S_t$  are regarded as being affected at present by the rest of the variables but not affecting any of them contemporaneously, as  $S_t$  can be smoothed over time. On the ordering of  $G_t$  and  $R_t$ , without theoretical reasons, we choose to model so that  $R_t$  affect instantaneously  $G_t$ . However, we test that estimation results are robust to this particular assumption.

---

<sup>16</sup>The only exception to this is to be found in Jaimes (2020).

<sup>17</sup>For example, a transfer increase could be perfectly used to offset expenditures in the same year it was granted. As residuals are not correlated over time, this consideration is irrelevant to bias or forecasting prediction. However, performing causal impulse response analysis could be misleading.

<sup>18</sup>Note that the model described equation in 5 can be seen as a particular case where  $A_0$  was set equal to the identity matrix.

## 5.2 Data

We use panel data of fiscal variables for all 24 sub-national jurisdictions of Argentina. The data sample covers the period 1988-2021. Our baseline definition of the provincial deficit  $D_t$  is the one that allows the use of complete and comparable time series. Thus, it deserves some clarification. First,  $T_t$  does not include those associated with the National Education Fund, which was created in 2005. Second,  $R_t$  leaves aside capital revenues, given that the data shows missing data in some years and high volatility. Finally, neither  $R_t$  nor  $G_t$  associated with social security are considered, in order to preserve the homogeneity of the series throughout the sample. In any case, the robustness of the results to the inclusion of these concepts is tested in the robustness checks.

The data source is [Porto \(2004\)](#) for the period 1988-2000. Then, for the period 2001-2021, the source is the Ministry of Economy of Argentina. The GGP data draws from [Porto \(2004\)](#) for the period 1988-2000; from the Ministry of Industry and the Ministry of Economy for the period 2001-2004; and from [CEPAL \(2022\)](#) for the period 2004-2021. The provincial population data are drawn from the National Institute of Statistics and Census (INDEC). Descriptive statistics of our fiscal variables are shown in [Table 1](#). Variables have been deflected to constant pesos of 2021 and put in per capita terms. We can see that  $D_t$ , as we defined it, is positive on average as  $G_t$  is on average 34 percent bigger than provincial revenues (considering both  $R_t$  and  $T_t$ ). We have only 48 observations with fiscal surplus out of 813 observations. Maximum values of both  $G_t$  and  $T_t$  are concentrated in Santa Cruz and Tierra del Fuego provinces. By the coefficient of variation criterion,  $T_t$  is the most volatile variable, followed by  $G_t$ . On the other hand, the most stable fiscal variable is  $S_t$ .<sup>19</sup>

$D_t$  variation can be decomposed as  $\Delta D_t = \Delta G_t - \Delta R_t - \Delta T_t + \Delta S_t$ . With that in mind, in [Figure 3](#) we show the decomposition of  $\Delta D_t$  for the median province (ignoring the effect of debt services). Positive contributions to the  $\Delta D_t$  are increases in  $G_t$  and decreases in  $T_t$  and  $R_t$ . We can see that, on average, increases in  $T_t$  and  $R_t$  tend to be followed by rises in  $G_t$  and vice versa. Strong movements toward fiscal surplus can be observed in 1989, 2002 and 2018, coinciding with economic crises. These reductions in  $D_t$  were mainly carried out by cuts in  $G_t$ . Note that the overall pattern of adjustments shows that the  $D_t$  appears to be stationary around its mean value, thereby giving us a hint of an underlying stability tendency. For further insights, in [Figure A1](#) we plot the correlation between  $\Delta D_{t-1}$  and  $\Delta D_t$ . Consistently with our intuition, increases in deficit tend to be reverted.

---

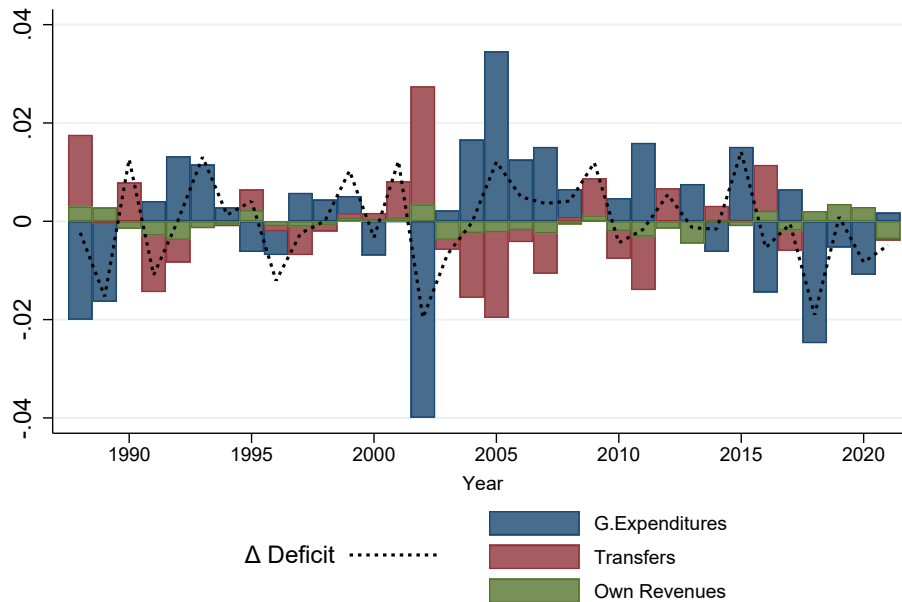
<sup>19</sup>This volatility order is in line with previous studies focused on municipalities.

**Table 1:** Descriptive statistics for Argentine provinces. Average for the period 1988-2021

	Mean	Std.dev.	Min.	Max.
$G_t$	169.9	103.8	24.85	657
$R_t$	32.96	29.91	1.563	195.7
$T_t$	94.10	52.82	4.179	295.4
$S_t$	3.869	4.375	0.000	33.83
$D_t$	46.73	55.84	-37.55	410.2
$\Delta G_t$	0.934	28.47	-224.2	188.2
$\Delta R_t$	0.752	6.018	-35.13	46.37
$\Delta T_t$	0.752	15.01	-123.4	101.6
$\Delta S_t$	0.101	3.122	-27.85	17.73
Population (in millions)	1.586	2.889	0.055	17.57

*Source:* Author's elaboration. *Notes:* Statistics for pooled observations. Fiscal variables are reported annually for all 24 sub-national entities. Data is expressed on a per capita basis in thousands of constant pesos of 2021.

**Figure 3:** Decomposition of deficit ( $D_t$ ) variation. Argentine provinces. Average for the period 1988-2021



*Source:* Author's elaboration.

### 5.3 Specification choice and testing

Statistical tests are needed to select the most accurate estimation model and check the underlying assumptions behind it. First, we must test whether all four fiscal variables are effectively cointegrated. Theoretically, this is the same as finding evidence that the transversality condition holds for provincial finances. Econometrically, it means that data is best modeled in the framework of a VEC model rather than a simple VAR model in differences.

As we are dealing with panel data, we cannot use the ordinary Dickey-Fuller (DF) test to check unit-roots of time series for the whole panel. Thus, we rely on Pesaran (2007)'s test for unit roots in panels, where the null hypothesis (i.e.,  $H_0$ ) states that the time series are non-stationary (in our case, in all 24 regions). Results are displayed in Table A2, column (1). We cannot reject  $H_0$  of non-stationary for all four fiscal variables except  $T_t$ . Regarding  $D_t$ , we reject  $H_0$  with a significance level of 5 %. As pointed out by Bessho & Ogawa (2015) and Solé-Ollé & Sorribas-Navarro (2012) this result is worth noting as it could suggest that fiscal deficits are not explosive in the long-run (i.e., shocks are being reverted). We also tested unit-root presence in all four budget variables in first differences, which seem to be strongly stationary. This adds more evidence to the supposition that variables in levels have unit-roots.<sup>20</sup>

Secondly, we need to choose the number of lags. For this purpose we rely on the log-likelihood ratio.<sup>21</sup> We show the test results in Table A3. First, we run the test in a cross-equation setting, that is, comparing the log-likelihood of the entire model under  $H_0$  or  $H_a$  specification. By this rule, we consistently reject the  $H_a$  of lag reduction for all lag orders tested. Following Jaimes (2020), another way of testing is to compare the log-likelihoods of each of the four estimated equations that make up the VEC model. However, in this way we only come to the same conclusion of preferring a bigger model over a shorter one. With that in mind, we choose a 3 lag-order model

---

<sup>20</sup>For robustness, we also run Im–Pesaran–Shin panel test (Im *et al.*, 2003) and conclusions still hold (see column (2) in Table A2). Finally, we performed individual DF tests for each of the 24 subnational units separately. In Table A2, column (3), we report the share of regions where we rejected  $H_0$  at a 5 % significance level for the variable of analysis. For no region we could reject  $H_0$  of non-stationarity in the cases of  $G_t$  and  $R_t$ , whereas in the cases of  $T_t$  we could only do so for 4 out of 24 regions. More importantly, we rejected  $H_0$  of non-stationarity of  $D_t$  for the majority of regions (71 %).

<sup>21</sup>We could think of having an alternative hypothesis (i.e.,  $H_a$ ) where our model is a VEC process of lag order  $k$  versus  $H_0$  of one VEC model with a lag order of  $k-1$ . Our primary statistic will be the log-likelihood ratio, which is proportional to the difference between the log-likelihood under  $H_a$  and  $H_0$ . Under  $H_0$ , the statistic asymptotically follows a chi-squared distribution with an order equal to the number of restrictions imposed. Intuitively, if this value is bigger than the critical value chosen, it means that the unconstrained model fits the data significantly better than the constrained one.

to preserve the parsimony of specification and save degrees of freedom.<sup>22</sup>

Third, we address another critical issue, which is the inclusion or absence of provincial fixed effects in our model. We tested it out by recurring again to the likelihood ratio criterion (Table A4). In a cross-equation setting, it is unclear whether to include fixed effects in our model, inasmuch as  $H_0$  of no fixed effects is rejected for 4 lags but not for 2 or 3. However, as we repeat the test on an equation-by-equation basis, we only reject no fixed effects inclusion for  $G_t$ .<sup>23</sup> So, fixed effects appear to be decisive in explaining differences in  $G_t$  across provinces but not income dynamics. Including fixed effects tends not to be recommended by previous literature as it is equivalent to assuming that fiscal deficits converge to different steady-state values. However, that hypothesis does not seem to be implausible. In our case, we performed a check on this assumption by modeling  $D_t$  as an AR(k) process:

$$D_{t,i} = \alpha + \sum_{h=1}^k \phi_h D_{t-h,i} + \mu_i + \epsilon_{t,i} \quad \text{for } k = 1, 2, \dots, 10 \quad (7)$$

where  $i$  indexes provinces. By making use of F-tests, we were able to reject  $H_0$  of no joint significance of provincial dummies ( $\mu_i$ ) with a significance of 1% even after including time-fixed effects and control for population change. Thus, we conclude that provinces have different steady-state deficit levels. Considering these results, we decided to include fixed effects in our modeling.

Finally, we also decided to include a polynomial time trend in each equation after performing likelihood ratio tests similar to the previously mentioned. We discard using time-specific fixed effects as that would mean to model adjustments only to idiosyncratic innovations, while the intertemporal budget constraint requires adjustments to all kinds of innovations (Buettner, 2009). Including a time trend would only mean to condition the model on long-run structural trends.

---

<sup>22</sup>It is worth mentioning that Holtz-Eakin & Rosen (1989), Dahlberg & Johansson (1998) and Dahlberg & Johansson (2000) provide evidence that local budgetary dynamics are best modeled with time spans of two to four years.

<sup>23</sup>For robustness, we carried out the Hausman test for all four equations, without being able to reject  $H_0$  of the nonexistence of fixed effects for  $T_t$  and  $S_t$ . We rejected  $H_0$  for  $G_t$  and  $R_t$  at 1% and 10% significance levels, respectively. So, the Hausman test seems only to mimic the results obtained by applying log-likelihood tests. This estimate is not shown in the paper. Naturally, it is available upon request.



## 6 Results

### 6.1 Baseline results

We begin by presenting the estimation of the vector  $\gamma$  in [Table 2](#). These coefficients describe the short-run adjustment made on fiscal variables to maintain  $D_t$  stability as  $D_t$  increases in one unit. To correct a positive deficit shock, it would be necessary for  $G_t$  to decrease, while  $R_t$  and  $T_t$  should grow to enhance the fiscal balance.  $S_t$  is expected to have a positive coefficient as part of the deficit increment could be balanced with debt increases, which in turn would mean higher  $S_t$  in the future. In this case, the estimated coefficient is a proxy of the implicit interest rate or time discount factor ([Buettner & Wildasin, 2006](#)). The signs of our estimates are in line with the aforementioned predictions. Furthermore,  $\gamma$  coefficients are statistically significant reinforcing the idea that an error correction mechanism exists.

**Table 2:** Estimates for the error-correction term. Vector  $\gamma$  in equation [5](#). Argentine provinces. Period 1988-2021

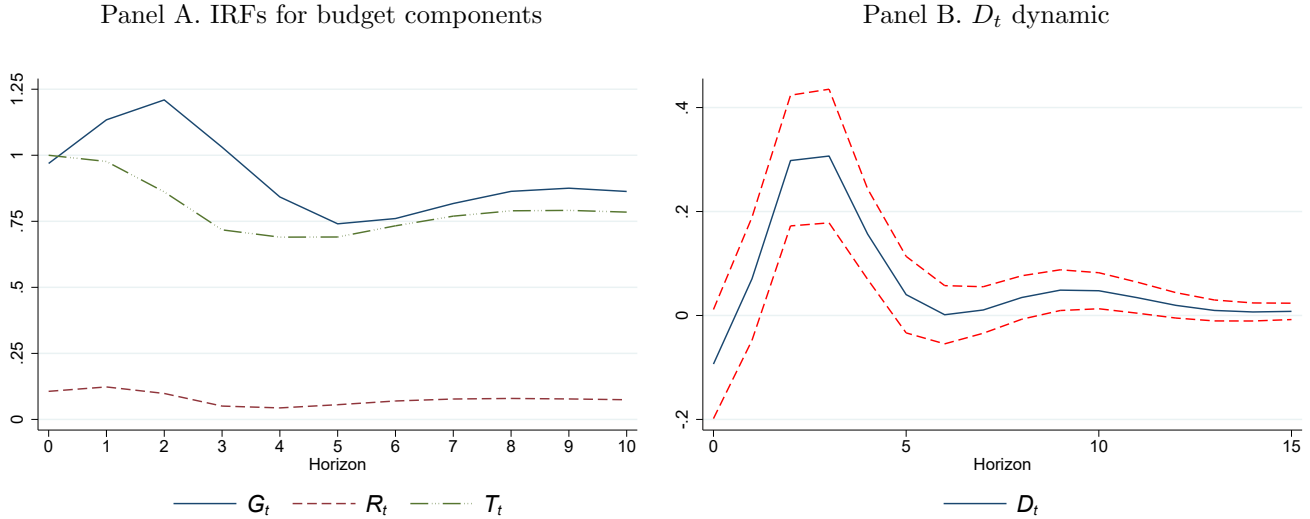
Equation	$\gamma$	Std. Error
$G_t$	-0.219***	(0.036)
$R_t$	0.022***	(0.004)
$T_t$	0.060*	(0.033)
$S_t$	0.005	(0.006)

*Source:* Author's elaboration. *Notes:* Cluster robust standard errors in parentheses.

The IRFs for a shock in  $T_t$  are presented in [Figure 4](#). We do not report the responses of  $S_t$  as they are usually negligible to explain the underlying processes. Following a shock of 1 peso in  $T_t$ ,  $G_t$  respond immediately with a more than proportional initial increase (Panel A in [Figure 4](#)). As mentioned in [Section 2](#), this short-run overshooting in  $G_t$  was also found in previous literature on Argentine provinces ([Vegh & Vuletin, 2015](#); [Besfamille et al., 2023](#)).  $R_t$  rise significantly with the shock in  $T_t$ , especially just after it. In fact,  $R_t$  increase by 10 cents contemporaneously with the shock in  $T_t$ . A similar short-run result was found by [Porto & Puig \(2022\)](#) for Argentine provinces, where  $R_t$  was estimated to increase by around 25 cents. Note that this result also reinforces the idea of complementarity between  $T_t$  and  $R_t$ . That is, it does not support the hypothesis of fiscal laziness. Jointly, the overshooting behavior in  $G_t$  and the smaller reaction in  $R_t$  generate a significant budget deficit within the next four years after the shock (Panel B in [Figure 4](#)). As time goes by, the initial overshooting in  $G_t$  ends and the level of  $G_t$  remains in line with the endogenous

growth in  $T_t$ , closing the deficit and reaching a balanced budget steady-state. The overall picture is that of a government that takes advantage of the increase in  $T_t$  by overspending the new resources. The amount of the expansion in  $G_t$  ends up requiring an increase in  $R_t$ , which could had been lowered since  $T_t$  were increased exogenously.

**Figure 4:** Baseline results. Dynamics of subnational budget adjustment. IRFs to a shock in  $T_t$ . Argentine provinces. Period 1988-2021



Source: Author's elaboration. Notes: in Panel B, dotted lines indicate 95 % confidence bands. Horizon denotes years.

In [Table 3](#) we present the discounted sum of the marginal changes in the IRFs. For this purpose we use the aforementioned implicit rate of interest (see [Table 2](#)). These discounted values show in a more compact way how the fiscal variables respond to preserve the transversality condition. In the long-run,  $G_t$  are increased by 83 cents,  $R_t$  by 8 cents, and  $T_t$  fall by 21 cents. The particular result on  $T_t$  suggests that of a 1 peso increase in  $T_t$  79 cents are permanent, so the surge in  $T_t$  remains over time. From these results we can also derive the effect of a permanent increase in  $T_t$ . Dividing the increase in  $G_t$  by the permanent increase in  $T_t$  we obtain the result that a 1 peso permanent increase in  $T_t$  is associated with a permanent surge in  $G_t$  of 1.05 pesos. On the other hand,  $R_t$  and  $S_t$  experiment permanent increments of 10 cents and 5 cents, respectively.

The increase in  $R_t$ , albeit small, is statistically significant both in the short- and in the long-run, which acts as evidence that  $T_t$  motivate provinces to end up increasing taxation. As  $T_t$  should help to relax financing constraints, the expected effect would be a reduction in  $R_t$  as tax rates could be lowered. As argued by [Masaki \(2018\)](#),  $T_t$  can actually increase  $R_t$  indirectly by expanding the tax base through fiscal stimulus and directly by allowing the government to pay for the direct costs of tax enforcement. This last problem is especially serious in places with unsound fiscal systems. All in all, jointly with the overshooting in  $G_t$ , these results give evidence of a

flypaper effect, by which grant recipients use  $T_t$  for expanding  $G_t$  and not for reducing  $R_t$  (instead actually increasing  $R_t$ ).

Calculating the present value change of the primary surplus involves summing the responses in  $R_t$  and  $T_t$  and subtracting the response in  $G_t$ , which yields a result close to negative one for a shock in  $T_t$ . This means that the initial surplus shock is reverted over time, which also acts as evidence of an underlying transversality condition as we do not force our model to reach this result. As in previous literature, the changes in primary surplus for all types of shocks are close to one in absolute value, except for the case of  $S_t$ . This last result is explained in the literature by arguing that it reflects temporal fluctuations in the debt service.

For completeness and although our main focus is on shocks to  $T_t$ , we note for further discussion that shocks to  $G_t$  are fully transitory in nature. An unexpected increase in  $G_t$  tends to be fully reverted in present value terms<sup>24</sup>.

**Table 3:** Baseline results. Dynamics of subnational budget adjustment. Implied present value responses to different shocks. Argentine provinces. Period 1988-2021

Response	Innovation to			
	$G_t$	$R_t$	$T_t$	$S_t$
$G_t$	-0.904*** (0.091)	0.888*** (0.183)	0.830*** (0.064)	-2.032*** (0.240)
$R_t$	0.019 (0.034)	-0.125* (0.067)	0.077*** (0.026)	-0.236*** (0.089)
$T_t$	0.075 (0.074)	-0.015 (0.150)	-0.209*** (0.051)	-1.203*** (0.199)
$S_t$	0.013 (0.013)	-0.010 (0.026)	0.043*** (0.010)	-0.414*** (0.034)

*Source:* Author's elaboration. *Notes:* Standard errors in parentheses were obtained by sampling from the normal joint distribution of the VECM estimates based on an estimate of the variance-covariance matrix. The number of samplings was set to 500.

<sup>24</sup>This result, albeit possibly too strong, is in line with previous studies within the VEC literature that have used  $G_t$  as a model variable, without decomposing it. By comparing the responses of  $G_t$  to a shock in itself for German municipalities (85 cents), Spanish (73 cents) and American (72 cents) it is apparent that  $G_t$  shocks tend to be corrected by themselves.

## 6.2 Robustness checks

As mentioned in the subsection 5.2, we used the most homogeneous definition of  $D_t$ , the one that allows the use of complete and comparable time series. However, this definition may raise concerns about measurement errors or the fact that it does not fully reflect the finances of each province at each point in time. To address these concerns, we present robustness tests of our baseline results in Figure 5 and Table 4.

First, Panel A in Table 4 shows results including transfers related to the National Education Fund, which was created in 2005 and became part of the federal government’s transfers to the provinces. Here we can appreciate IRFs very much in line with those observed when using the baseline definition of  $D_t$  (Panel A in Figure 5). Second, Panel B includes royalties from natural resources in  $R_t$ . Royalties benefit a certain group of provinces and represent provinces’ own non-tax resources.<sup>25</sup> The pattern using the baseline definition of  $D_t$  is maintained again with the observation that the reaction of  $G_t$  is lower in levels. In the long run,  $G_t$  are increased by 74 cents (Panel B in Table 4). Finally, in Panel C, the capital resources of the provinces are included in  $R_t$ . Again, the original result is supported:  $G_t$  shows a similar evolution to that in the baseline definition. A higher reaction of  $R_t$  to the inclusion of capital revenues is observed with respect to the baseline. In the long-run,  $R_t$  are increased by 26 cents (Panel C in Table 4) Again, the overall picture is that of a government that takes advantage of the increase in  $T_t$  by overspending the new resources. The amount of the expansion in  $G_t$  ends up requiring an increase in  $R_t$ , which could had been lowered since  $T_t$  were increased exogenously.

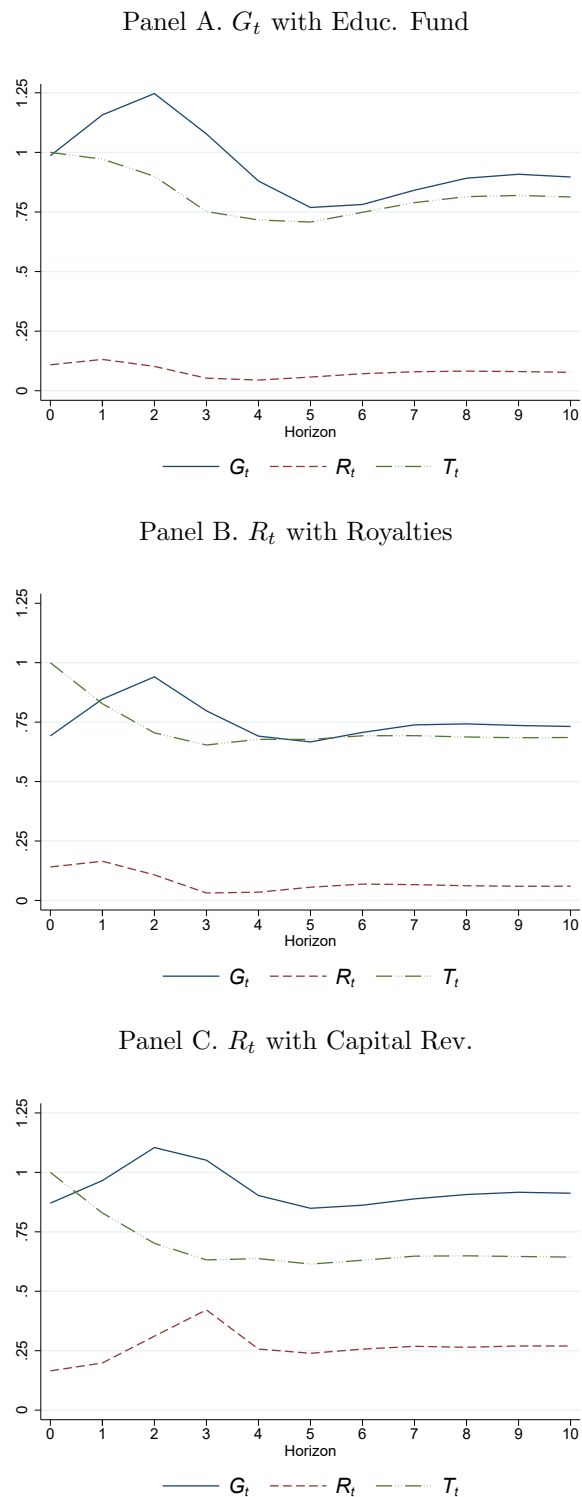
**Table 4:** Robustness checks. Dynamics of subnational budget adjustment. Implied present value responses to a shock in  $T_t$ . Argentine provinces. Period 1988-2021

Response	Definition used		
	$G_t$ with Educ. Fund	$R_t$ with Royalties	$R_t$ with Capital Rev.
$G_t$	0.859*** (0.069)	0.736*** (0.054)	0.904*** (0.065)
$R_t$	0.08*** (0.028)	0.061** (0.023)	0.264*** (0.048)
$T_t$	-0.18*** (0.055)	-0.313*** (0.041)	-0.361*** (0.038)
$S_t$	0.045*** (0.010)	0.009 (0.010)	-0.001 (0.011)

*Source:* Author’s elaboration. *Notes:* Standard errors in parentheses were obtained by sampling from the normal joint distribution of the VECM estimates based on an estimate of the variance-covariance matrix. The number of samplings was set to 500.

<sup>25</sup>Note that in practice royalties can also be thought of as a transfer that depends on provincial hydrocarbon production and its export prices.

**Figure 5:** Robustness checks. Dynamics of subnational budget adjustment. IRFs to a shock in  $T_t$ . Argentine provinces. Period 1988-2021



Source: Author's elaboration. Notes: Horizon denotes years.

## 7 Discussion of potential mechanisms

Underneath all these results, is the fact that the initial increase in  $T_t$  generates an endogenous flow of  $T_t$  which ultimately allows the permanent increase in  $G_t$ . The mechanisms by which the initial rise in  $T_t$  translates to more  $T_t$  over time (especially taking into account that it is an exogenous variable to the province) are usually not discussed in the literature. In this section, we put forward the hypothesis that it could be explained partly as a result of sub-national  $T_t$  that react endogenously to the increases in  $G_t$ , in the context of a tax sharing regime.

As discretionary  $T_t$  do not represent the bulk of federal grants, part of the endogenous growth should be explained by the “Coparticipación” channel. More important, the increment in  $G_t$  provides a fiscal stimulus to the recipient economy, which allows for a surge in its  $R_t$  (in line with our results). However, as the “Coparticipación” regime ask for provinces to share their gross taxation between them, fiscal-induced increases in the tax base of one province end up being received by the other provinces as grants, thereby allowing them to also expand their  $G_t$ . If these new expenditures also allow an increment in the tax base of the other provinces, then the initial province will receive part of the income growth in the form of grants, thereby explaining the persistence of a flow of grants.

A simplistic model capturing these ideas can be characterized as follows. Let  $t$  index years and  $i$  index provinces.  $K$  is the total number of provinces. The state-level GGP ( $Y_{i,t}$ ) (expressed in reduced-form) is a function of the lagged level of provincial expenditure ( $G_{i,t}$ ). Thus,  $Y_{i,t} = \beta G_{i,t-1}$ , where  $\beta$  represents the commonly known fiscal multiplier. In addition, we suppose that gross fiscal revenues ( $R_{i,t}^{\text{gross}}$ ) are a fixed share  $\tau$  of GDP. Thus,  $R_{i,t}^{\text{gross}} = \tau Y_{i,t}$ .<sup>26</sup> By the “Coparticipación” regime, a share  $\gamma$  of  $R_{i,t}^{\text{gross}}$  is retained by the province (i.e., own revenues,  $R_{i,t}$ ) and a share  $1 - \gamma$  (i.e, contribution,  $C_{i,t}^{\text{cop}}$ ) is transferred to a common provincial pool (i.e., coparticipable mass,  $M_t$ ). The former is the only channel by which provinces interact in this model. These relations can be formalized through the following equations:

$$R_{i,t} = \gamma R_{i,t}^{\text{gross}} \quad (8)$$

$$C_{i,t}^{\text{cop}} = (1 - \gamma) R_{i,t}^{\text{gross}} \quad (9)$$

$$M_t = \sum_{j=1}^K C_{j,t}^{\text{cop}} \quad (10)$$

---

<sup>26</sup>As [Besfamille et al. \(2023\)](#) pointed out, Argentine provinces have little space to increase their own tax collection, so the assumption seems appropriate.

Similar to the real (i.e., in practice) co-participation regime, each province receives in return an exogenous share of  $M_t$ . For simplicity purposes, we will consider that each province receives the same share of the common pool as the federal grant ( $T_{i,t}$ ). Thus,  $T_{i,t} = \frac{1}{K}M_t$ . We impose a zero-deficit condition (i.e.,  $D_{i,t} = 0$ ), that acts as a strong form of stationarity. This means that  $G_{i,t}$  is the variable that closes the deficit passively. This is a strong assumption but goes in line with the first column of [Table 3](#), where we saw that a shock in  $G_t$  is mainly reverted by itself in such a form that the increase ends up being exclusively transitory. Subsequent specifications backed this result.

$$D_{i,t} = G_{i,t} + rB_{i,t} - R_{i,t} - T_{i,t} = 0 \quad (11)$$

We will ignore debt services, supposing  $r = 0$ . Thus,  $G_{i,t} = T_{i,t} + R_{i,t}$ . With this in mind, and making the appropriate substitutions, we can express the provincial level of public expenditure in  $t$  as a function of its own level in  $t - 1$  (which affects expenditures today via induced taxation) and the level in  $t - 1$  of the  $K - 1$  other provinces (which affect expenditures today via the ‘‘Coparticipaci3n’’ channel):

$$G_{i,t} = \frac{1}{K} \sum_{j \neq i} (1 - \gamma)\tau\beta G_{j,t-1} + \frac{\tau\beta}{K} (1 + \gamma(K - 1)) G_{i,t-1} \quad (12)$$

Defining the elements  $a$  and  $b$ :

$$a = \frac{\tau\beta}{K} (1 + \gamma(K - 1)) \quad b = \frac{(1 - \gamma)\tau\beta}{K} \quad (13)$$

If we perform recursive substitutions on equation 12, we can obtain a dynamic matrix equation that describes the joint evolution of provincial finances in terms of the initial vector of transfers and own revenues:

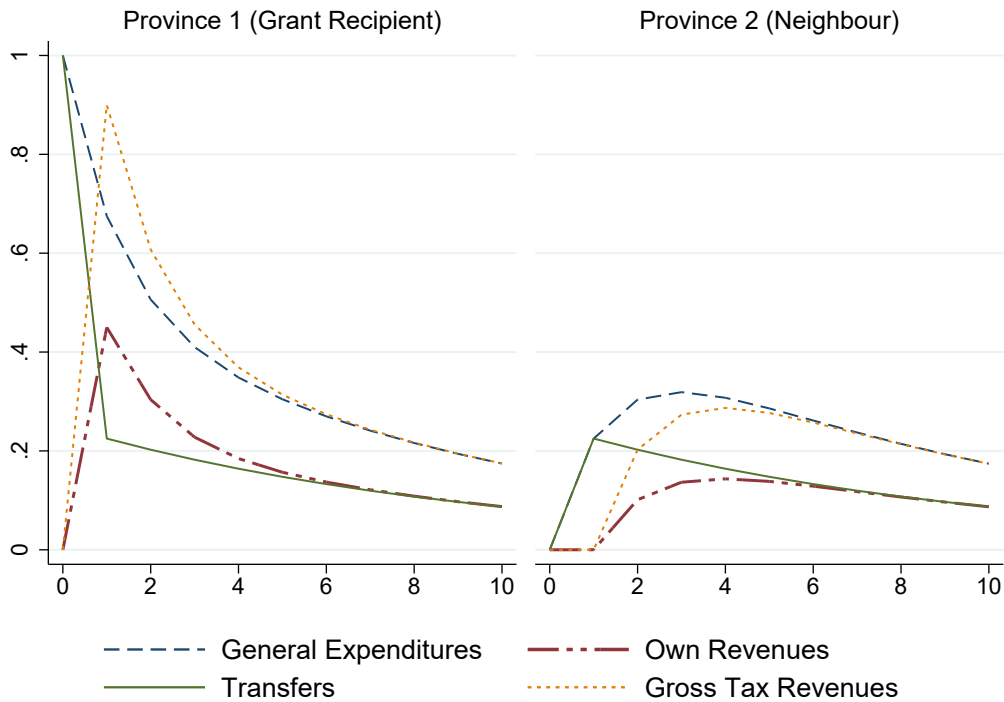
$$\begin{pmatrix} G_{1,t} \\ G_{2,t} \\ \vdots \\ G_{K,t} \end{pmatrix} = A^t \begin{pmatrix} T_{1,0} + R_{1,0} \\ T_{2,0} + R_{2,0} \\ \vdots \\ T_{K,0} + R_{K,0} \end{pmatrix} \quad (14)$$

where the  $A$  matrix of order  $k \times k$  has  $a$  elements in its main diagonal and  $b$  elements in the rest of its entries. Consider the case of two provinces  $K = 2$ . Eigenvalues of  $A$  are given by  $\lambda_1 = \gamma\tau\beta$  y  $\lambda_2 = \tau\beta$ . Thus, the system is stable if and only if the fiscal multiplier  $\beta$  fulfills the condition  $\beta < \frac{1}{\tau}$ . Intuitively, a sufficiently big fiscal multiplier implies that the system grows infinitely from an increase in  $G_{i,t}$ .

In [Figure 6](#) we plot the IRFs related to a shock in  $T_{i,t}$  implied by the model (in the stationary case). The initial increase of 1 peso in  $T_{i,t}$  allows an initial increase in  $G_{i,t}$  of the same

size. In the following period, GGP has grown and so do gross taxes. A share of this increase is kept directly by the province; the other one is brought to the common “Coparticipación” pool. As Province 2 does not contribute anything in the first period, the contribution of province 1 is divided equally between the two provinces. However, from now on the GGP in province 2 will raise, thereby allowing it to generate an endogenous flow of incomes that will allow province 2 to contribute to the coparticipable mass. That is, the initial increase in  $T_{i,t}$  will generate a continuous flow of transfers in each province. This result depends both on the existence of fiscal multipliers and a compulsory contribution to the common tax pool. As we have not chosen a fiscal multiplier big enough the real effects in fiscal variables will disappear over time.

**Figure 6:** Simulation of potential mechanisms through a simple two-province model. IRFs to a shock in  $T_{i,t}$



Source: Author’s elaboration. Notes: Model responses to a shock in Transfers in Province 1 (Stationary Case).



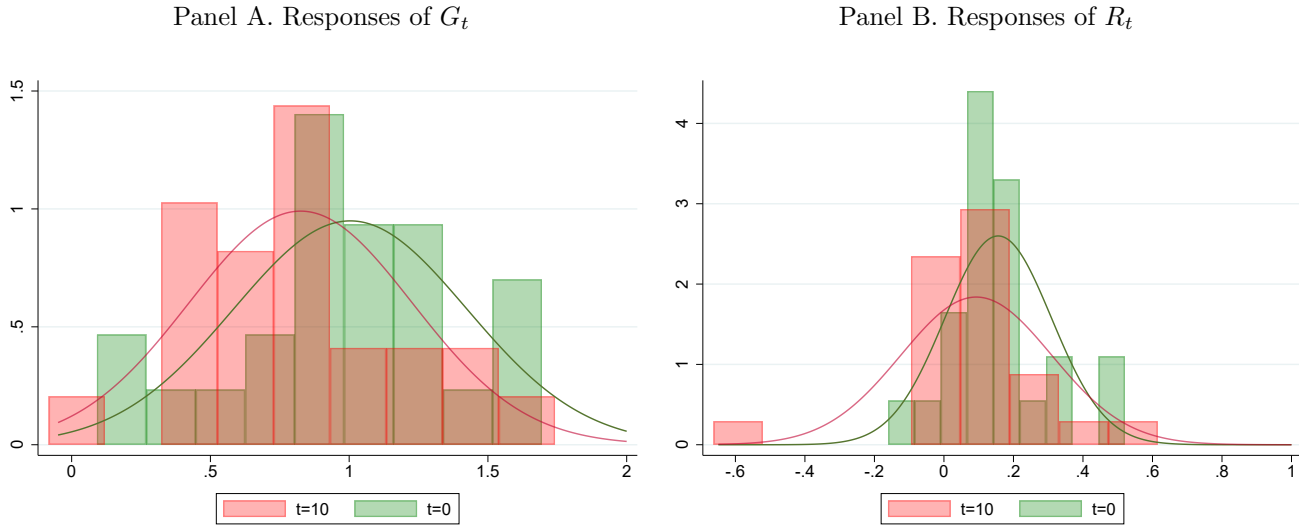
## 8 Extensions

### 8.1 Provincial decomposition

Argentina's provinces present remarkable heterogeneity in spending per capita, productive structure, urbanization, and social indicators (Porto, 2004). This naturally raises the question of to what extent Argentina's regional disparities lead to the dynamics of subnational budget adjustments to be also disparate. To inquire about this issue, instead of estimating the VEC model for the whole sample, we have done it province by province. Naturally, we might be losing efficiency derived from the smaller sample sizes, but, on the other part, we could reduce the potential model misspecification associated with the assumption that fiscal adjustment mechanisms are the same for all provinces.

As we are estimating the model province by province, each province now has its own set of associated impulse response functions. In Figure 7, we present the histograms of the estimated responses of  $G_t$  and  $R_t$  to a shock in  $T_t$ , both in  $t = 0$  and  $t = 10$ . As was apparent from the IRFs shown earlier, the instantaneous response is stronger than the final effect to which responses ultimately converge. This is why the histograms for effects that are more distant in time are centered to the left of the histogram (corresponding to the case of  $t = 0$ ). The mean effect at  $t = 0$  for individual estimations was 1.004 ( $se = 0.42$ ) for  $G_t$  and 0.156 ( $se = 0.15$ ) for  $R_t$ . At the  $t = 10$  horizon mean effects are 0.825 ( $se = 0.4$ ) for  $G_t$  and 0.126 ( $se = 0.15$ ) for  $R_t$  (excluding the outlier). These results are closely similar to the ones estimated earlier for the whole panel, which gives some confidence in the hypothesis that provinces do not differ as much in their fiscal processes as to be necessary to estimate the model province by province.

**Figure 7:** Provincial decomposition. Dynamics of subnational budget adjustment. IRFs to a shock in  $T_t$ . Argentine provinces. Period 1988-2021



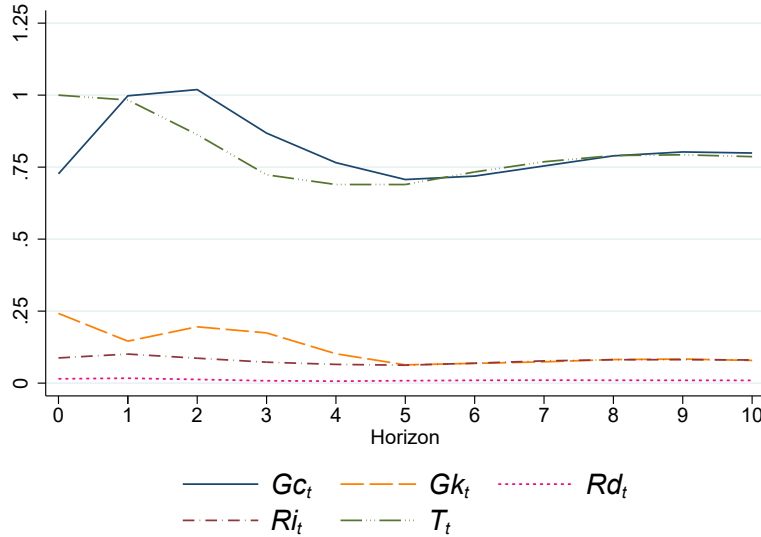
Source: Author's elaboration.

## 8.2 Budget Decomposition

Argentine provinces have access to different types of expenditures (i.e., current vs. capital) and taxes (i.e., on mobile factors, such as indirect taxation on gross income vs. on immobile factors, such as direct taxation on property). In turn, the trends described in Section 3 support evidence of biases in the use of each of these fiscal instruments. Therefore, it may become interesting to disentangle, in addition to how  $G_t$  and  $R_t$  react to a shock in  $T_t$ , which are the fiscal instruments chosen by the policymaker to adjust the provincial budget. To inquire on this issue, we estimate the VEC model but decomposing now  $G_t$  in current expenditures (i.e.,  $Gc_t$ ) and capital expenditures (i.e.,  $Gk_t$ ). We also decompose  $R_t$  between direct and indirect taxes (i.e.,  $Rd_t$  vs.  $Ri_t$ ). The adopted Cholesky order is  $T_t$ ,  $Rd_t$ ,  $Ri_t$ ,  $Gc_t$ ,  $Gk_t$  and finally,  $S_t$ . In any case, the results are robust to changes in this particular order.

The IRFs are shown in Figure 8, while the implied present value responses are presented in Table 5. As was the case in previous estimations, a positive shock in  $T_t$  is corrected via a decrease in  $T_t$  and an increase in  $G_t$ . The reduction in  $T_t$  of 21 cents is equal to the one estimated with four basic variables. Also, the induced increment in  $G_t$  could now be roughly decomposed between the contribution of  $Gc_t$  (i.e., 78 cents) and the one of  $Gk_t$  (i.e., 7 cents, although not statistically significant). Note that the joint effect is similar to the effect on total expenditures (i.e., 83 cents as previously presented in Table 3).

**Figure 8:** Budget Decomposition. Dynamics of subnational budget adjustment. IRFs to a shock in  $T_t$ . Argentine provinces. Period 1988-2021



Source: Author's elaboration. Notes: Horizon denotes years.

The fact that the adjustment is carried out by means of an increase in  $Gc_t$  instead of  $Gk_t$  is opposed with what has been found in this type of VEC studies. Among the two studies that have decomposed general expenditures in the sense that we do, the one for Colombia states that a one-unit shock in  $T_t$  is corrected by a  $Gc_t$  adjustment of 1 cent and a  $Gk_t$  one of 35 cents. The contribution based on Japanese municipalities documents an increment in  $Gc_t$  (although not statistically significant) and an increase in  $Gk_t$  (55 cents). [Bessho & Ogawa \(2015\)](#) argues that this may be because spending on personnel and on social assistance, which account for an important share of  $Gc_t$ , cannot be adjusted as flexibly as  $Gk_t$ . However, as [Porto & Puig \(2022\)](#) posit, our result goes in line with a public choice model where sub-national politicians favor  $Gc_t$ , as it could yield a greater return on votes than  $Gk_t$ .

Finally, we can notice that in the long-run  $Ri_t$  increase by 8 cents while  $Rd_t$  do so by just 1. This also goes theoretically in line with [Smart \(1998\)](#) and [Porto & Puig \(2022\)](#), the former authors also having obtained empirical evidence of this result for Argentine Provinces. In accordance with a public choice model, this result is explained by the fact that tax visibility differs for both types of taxes. As indirect taxes are usually less visible, they have a lower political cost than direct ones. This could end up biasing the tax structure towards indirect taxation.

**Table 5:** Budget Decomposition. Dynamics of subnational budget adjustment. Implied present value responses to different shocks. Argentine provinces. Period 1988-2021

Response	Innovation to					
	$Gc_t$	$Gk_t$	$Rd_t$	$Ri_t$	$T_t$	$S_t$
$Gc_t$	-0.369*** (0.113)	-0.314*** (0.123)	1.342 (0.893)	1.137*** (0.300)	0.780*** (0.077)	-1.801*** (0.305)
$Gk_t$	-0.512*** (0.063)	-0.605*** (0.070)	0.454 (0.512)	-0.096 (0.174)	0.067 (0.048)	-0.287* (0.160)
$Rd_t$	-0.001 (0.006)	-0.001 (0.007)	-0.235*** (0.041)	0.003 (0.016)	0.010** (0.004)	-0.004 (0.016)
$Ri_t$	0.032 (0.029)	-0.022 (0.035)	1.002*** (0.267)	-0.104 (0.079)	0.080*** (0.023)	-0.303*** (0.084)
$T_t$	0.054 (0.079)	0.082 (0.087)	0.062 (0.560)	0.015 (0.206)	-0.214*** (0.050)	-1.152*** (0.208)
$S_t$	0.011 (0.014)	0.022 (0.016)	0.103 (0.105)	-0.034 (0.037)	0.043*** (0.01)	-0.398*** (0.035)

*Source:* Author's elaboration. *Notes:* Standard errors in parentheses were obtained by sampling from the normal joint distribution of the VECM estimates based on an estimate of the variance-covariance matrix. The number of samplings was set to 500.

## 9 Concluding remarks

In this paper we try to shed light on *how do subnational governments, upon receiving a transfer from a higher level of government, adjust their fiscal balances?* We provide answers using the case of Argentina, which presents features that are common to many other federal countries, making the case study attractive.

We found evidence that the fiscal deficits of Argentine provinces follow a stationary behavior. This allows us to disentangle the nature of fiscal adjustments via a cointegration analysis, especially the dynamics of shocks to transfers. In contrast to previous literature, our model allows us to explore the chain of effects that are caused by a shock in transfers and how fiscal equilibrium is recovered in future periods, thus separating short-run and long-run analyses.

An exogenous increase in transfers increases government expenses in the short-run. At the same time, own revenues also rise. This result on the revenue side is compatible with a crowding-in effect, as own revenues are increased at the same time the province receives more funds from the federal government. That is, we do not support the hypothesis of fiscal laziness. As government expenses also rise, there is evidence of an ongoing fly-paper effect. In the long-run, public spending decreases, thereby allowing for a recovery of fiscal equilibrium. Transfers remain positive after the initial shock, which we show could be explained in part by the fact that in the “Coparticipación”

regime, although grants themselves are exogenous to provinces, the common pool of taxes that is meant to be shared depends endogenously on the joint evolution of provincial economies in a context of fiscal multipliers. Finally, we found evidence that the bulk of the increase in government expenses is carried out by current expenditures as opposed to capital expenditures. On the other hand, the surge in taxation comes at the expense of a more indirect tax structure. Both results are aligned with the fiscal literature related to different political incentives between variables with dissimilar degrees of public visibility.

Overall, we believe that the paper is informative and poses challenges for the design of subnational fiscal policy. The fact that subnational policy makers increase the relative participation of indirect taxes and lower the relative one of capital expenditure may be problematic for economic welfare. On the expenditure side, there is a discussion about whether the capital expenditure multiplier is higher than the current expenditure multiplier. While some contributions support this idea, including specific evidence for the Argentine provinces (Ilzetzki *et al.*, 2013; Izquierdo *et al.*, 2019), others provide contrary evidence (Boehm, 2020). In any case and considering that the objective of this paper is not to measure the fiscal multiplier, if capital spending has higher effects on economic activity than current spending, the behavior of the subnational politician could compromise economic growth in the medium- and long-run. Similar arguments apply on the taxation side. Some contributions support that the effects of taxes on economic activity are nonlinear at initial levels of taxation (Gunter *et al.*, 2021). That is, the tax multiplier becomes more negative when taxes are increased from higher tax levels. If the subnational politician chooses to increase indirect taxes that already have a greater relative weight in the tax structure, again, economic growth in the medium and long-run can be compromised.

## References

- Ahmad, Ehtisham (ed). 1997. *Financing Decentralized Expenditures*. Books, no. 1133. Edward Elgar Publishing.
- Bailey, Stephen J., & Connolly, Stephen. 1998. The Flypaper Effect: Identifying Areas for Further Research. *Public Choice*, **95**(3/4), 335–361.
- Becker, Johannes, Hopp, Daniel, & Kriebel, Michael. 2020. Mental accounting of public funds – The flypaper effect in the lab. *Journal of Economic Behavior Organization*, **176**(C), 321–336.
- Bennett, James T., & Mayberry, Eddie R. 1979. Federal Tax Burdens and Grant Benefits to States: The Impact of Imperfect Representation. *Public Choice*, **34**(3/4), 255–269.
- Besfamille, Martín, Jorrat, Diego A., Manzano, Osmel, Quiroga, Bernardo F., & Sanguinetti, Pablo. 2023. How do subnational governments react to shocks to different revenue sources? Evidence from hydrocarbon-producing provinces in Argentina. *Journal of Urban Economics*, **136**, 103558.

- Bessho, Shun-ichiro, & Ogawa, Hikaru. 2015. Fiscal adjustment in Japanese municipalities. *Journal of Comparative Economics*, **43**(4), 1053–1068.
- Bird, Richard, & Vaillancourt, François. 1999. *Fiscal Decentralization in Developing Countries*. Cambridge University Press.
- Blöchliger, Hansjörg, & Charbit, Claire. 2008. Fiscal equalisation. *OECD Journal: Economic Studies*, **2008**(1), 1–22.
- Boadway, Robin, & Shah, Anwar. 2009. *Fiscal Federalism: Principles and Practice of Multiorder Governance*. Cambridge University Press.
- Boehm, Christoph E. 2020. Government consumption and investment: Does the composition of purchases affect the multiplier? *Journal of Monetary Economics*, **115**(C), 80–93.
- Bohn, Henning. 1991. Budget balance through revenue or spending adjustments?: Some historical evidence for the United States. *Journal of Monetary Economics*, **27**(3), 333–359.
- Borck, Rainald. 2003. Tax competition and the choice of tax structure in a majority voting model. *Journal of Urban Economics*, **54**(1), 173–180.
- Bradford, David F., & Oates, Wallace E. 1971. The Analysis of Revenue Sharing in a New Approach to Collective Fiscal Decisions. *The Quarterly Journal of Economics*, **85**, 416–439.
- Buettner, Thiess. 2009. The contribution of equalization transfers to fiscal adjustment: Empirical results for German municipalities and a US-German comparison. *Journal of Comparative Economics*, **37**(3), 417–431.
- Buettner, Thiess, & Krause, Manuela. 2021. Fiscal equalization as a driver of tax increases: empirical evidence from Germany. *International Tax and Public Finance*, **28**(1), 90–112.
- Buettner, Thiess, & Wildasin, David E. 2006. The dynamics of municipal fiscal adjustment. *Journal of Public Economics*, **90**(6-7), 1115–1132.
- CEPAL, Equipo de trabajo de la CEPAL y el Ministerio de Economía de la Argentina. 2022. *Desagregación provincial del valor agregado bruto de la Argentina, base 2004*. Tech. rept.
- Chetty, Raj, Looney, Adam, & Kroft, Kory. 2009. Saliency and Taxation: Theory and Evidence. *American Economic Review*, **99**(4), 1145–1177.
- Cortés Conde, Roberto. 2012. *Poder, Estado y Política*. Edhasa.
- Dahlberg, Matz, & Johansson, Eva. 1998. The revenues-expenditures nexus: panel data evidence from Swedish municipalities. *Applied Economics*, **30**(10), 1379–1386.
- Dahlberg, Matz, & Johansson, Eva. 2000. An examination of the dynamic behaviour of local governments using GMM bootstrapping methods. *Journal of Applied Econometrics*, **15**(4), 401–416.
- Dahlberg, Matz, Mörk, Eva, Rattsø, Jørn, & Ågren, Hanna. 2008. Using a discontinuous grant rule to identify the effect of grants on local taxes and spending. *Journal of Public Economics*, **92**(12), 2320–2335.
- Ferede, Ergete. 2017. The Incentive Effects of Equalization Grants on Tax Policy: Evidence from Canadian Provinces. *Public Finance Review*, **45**(6), 723–747.

- Goodspeed, Timothy J. 2002. Bailouts in a Federation. *International Tax and Public Finance*, **9**, 409–421.
- Gramlich, Edward M. 1969. State and Local Governments and Their Budget Constraint. *International Economic Review*, **10**, 163–182.
- Gunter, Samara, Riera-Crichton, Daniel, Vegh, Carlos A., & Vuletin, Guillermo. 2021. Non-linear effects of tax changes on output: The role of the initial level of taxation. *Journal of International Economics*, **131**(C).
- Henderson, James M. 1968. Local Government Expenditures: A Social Welfare Analysis. *The Review of Economics and Statistics*, **50**(2), 156–163.
- Hettich, Walter, & Winer, Stanley. 1984. A positive model of tax structure. *Journal of Public Economics*, **24**(1), 67–87.
- Hettich, Walter, & Winer, Stanley. 1999. *Democratic Choice and Taxation*. Cambridge University Press.
- Hines, James R., & Thaler, Richard H. 1995. The Flypaper Effect. *Journal of Economic Perspectives*, **9**, 217–226.
- Holcombe, Randall G., & Zardkoohi, Asghar. 1981. The Determinants of Federal Grants. *Southern Economic Journal*, **48**(2), 393–399.
- Holm-Hadulla, Frédéric. 2020. Fiscal equalization and the tax structure. *Regional Science and Urban Economics*, **81**(C).
- Holtz-Eakin, Douglas, & Rosen, Harvey S. 1989. The ‘rationality’ of municipal capital spending: Evidence from New Jersey. *Regional Science and Urban Economics*, **19**(3), 517–536.
- Ilzetzki, Ethan, Mendoza, Enrique G., & Végh, Carlos A. 2013. How big (small?) are fiscal multipliers? *Journal of Monetary Economics*, **60**(2), 239–254.
- Im, Kyung So, Pesaran, M. Hashem, & Shin, Yongcheol. 2003. Testing for unit roots in heterogeneous panels. *Journal of Econometrics*, **115**(1), 53–74.
- Inman, Robert P. 2003. Transfers and bailouts : enforcing local fiscal discipline with lessons from US federalism. In *J. A. Rodden, G. S. Eskeland, and J. Litvack (eds), Fiscal decentralization and the challenge of hard budget constraints*. MIT Press.
- Izquierdo, Alejandro, Lama, Ruy E., Medina, Juan Pablo, Puig, Jorge P., Riera-Crichton, Daniel, Vegh, Carlos A., & Vuletin, Guillermo. 2019 (Nov.). *Is the Public Investment Multiplier Higher in Developing Countries? An Empirical Investigation*. NBER Working Papers 26478. National Bureau of Economic Research, Inc.
- Jaimes, Richard. 2020. Fiscal adjustments at the local level: evidence from Colombia. *International Tax and Public Finance*, **27**(5), 1148–1173.
- Jones, Mark P., Sanguinetti, Pablo, & Tommasi, Mariano. 2000. Politics, Institutions, and Fiscal Performance in a Federal System: An Analysis of the Argentine Provinces. *Journal of Development Economics*, **61**, 305–333.
- Keen, Michael. 2014. Targeting, cascading and indirect tax design. *Indian Growth and Development Review*, **7**(2), 181–201.
- Kornai, Janos. 1986. The Soft Budget Constraint. *Kyklos*, **39**(1), 3–30.

- Lago, Manuel E., Lago-Penas, Santiago, & Martinez-Vazquez, Jorge. 2024. On the effects of intergovernmental grants: a survey. *International Tax and Public Finance*.
- Lewis, Blane D., & Smoke, Paul. 2017. Intergovernmental Fiscal Transfers and Local Incentives and Responses: The Case of Indonesia. *Fiscal Studies*, **38**(1), 111–139.
- Martinez-Vazquez, Jorge, & Searle, Bob (eds). 2007. *Fiscal Equalization*. Springer Books, nos. 978–0–387–48988–9. Springer.
- Masaki, Takaaki. 2018. The Impact of Intergovernmental Transfers on Local Revenue Generation in Sub-Saharan Africa: Evidence from Tanzania. *World Development*, **106**, 173–186.
- Mikesell, John. 2007. *Gross receipts taxes in state government finance: A review of their history and performance*. Background Paper 53. Tax Foundation.
- Mill, J.S. 1848. *Principles of political economy*. Oxford: Oxford University Press. Most recent version published in 1994.
- Mogues, Tewodaj, & Benin, Samuel. 2012. Do External Grants to District Governments Discourage Own Revenue Generation? A Look at Local Public Finance Dynamics in Ghana. *World Development*, **40**, 1054–1067.
- Oates, Wallace E. 1972. *Fiscal Federalism*. Harcourt Brace Jovanovich.
- Oates, Wallace E. 1999. An Essay on Fiscal Federalism. *Journal of Economic Literature*, **37**(3), 1120–1149.
- Oates, Wallace E. 2005. Toward A Second-Generation Theory of Fiscal Federalism. *International Tax and Public Finance*, **12**, 349–373.
- Oates, Wallace E. 2008. On The Evolution of Fiscal Federalism: Theory and Institutions. *National Tax Journal*, **61**, 313–334.
- Oates, Wallace E., & Schwab, Robert M. 1988. Economic competition among jurisdictions: efficiency enhancing or distortion inducing? *Journal of Public Economics*, **35**(3), 333–354.
- OECD. 2019. *Making Decentralisation Work*.
- OECD, Inter-American Center of Tax Administrations, Economic Commission for Latin America and the Caribbean, & Inter-American Development Bank. 2022. *Estadísticas tributarias en América Latina y el Caribe 2022*.
- Pesaran, M. Hashem. 2007. A simple panel unit root test in the presence of cross-section dependence. *Journal of Applied Econometrics*, **22**(2), 265–312.
- Porto, Alberto. 2004. *Disparidades Regionales y Federalismo Fiscal*. EDULP.
- Porto, Alberto. 2016. *Transferencias intergubernamentales y disparidades fiscales a nivel subnacional en Argentina*. Report IDB-DP-494. Inter-American Development Bank.
- Porto, Alberto. 2019. *Temas de políticas públicas*. CEFIP, IIE, Facultad de Ciencias Económicas, Universidad Nacional de La Plata.
- Porto, Alberto, & Puig, Jorge. 2022. The effects of intergovernmental transfers on the level and structure of subnational taxes and spendings. *CEFIP, Working Papers, Universidad Nacional de La Plata*.



- Porto, Alberto, & Puig, Jorge. 2023. Fiscal Federalism: The Interaction between Own Revenues and Intergovernmental Transfers in Local Governments—The Case of Municipalities in Buenos Aires. *Publius: The Journal of Federalism*, **53**(4), 642–678.
- Porto, Alberto, & Sanguinetti, Pablo. 2001. Political Determinants of Intergovernmental Grants: Evidence From Argentina. *Economics & Politics*, **13**(3), 237–256.
- Porto, Alberto, Garriga, Marcelo, & Rosales, Walter. 2014. Impuesto a los ingresos brutos: "ave Fenix" de la estructura tributaria subnacional. *Estudios Economicos*, **031**(62), 49–85.
- Prud'homme, Rémy. 1995. The Dangers of Decentralization. *The World Bank Research Observer*, **10**(2), 201–220.
- Qian, Yingyi, & Roland, Gérard. 1998. Federalism and the Soft Budget Constraint. *The American Economic Review*, **88**(5), 1143–1162.
- Radics, Axel, Vázquez, Francisco, Benítez, Noel Pérez, & Ruelas, Ignacio. 2022. *Panorama de las relaciones fiscales entre niveles de gobierno de países de América Latina y el Caribe*. Tech. rept.
- Rogoff, Kenneth. 1990. Equilibrium Political Budget Cycles. *American Economic Review*, **80**(1), 21–36.
- Sausgruber, Rupert, & Tyran, Jean-Robert. 2005. Testing the Mill hypothesis of fiscal illusion. *Public Choice*, **122**(1), 39–68.
- Skidmore, Mark. 1999. Tax and Expenditure Limitations and the Fiscal Relationships between State and Local Governments. *Public Choice*, **99**, 77–102.
- Smart, Michael. 1998. Taxation and Deadweight Loss in a System of Intergovernmental Transfers. *Canadian Journal of Economics*, **31**(1), 189–206.
- Solé-Ollé, Albert, & Sorribas-Navarro, Pilar. 2012. The dynamic adjustment of local government budgets: does Spain behave differently? *Applied Economics*, **44**(25), 3203–3213.
- Taiwo, Kayode. 2022. Intergovernmental Transfers and Own Revenues of Subnational Governments in Nigeria. *Hacienda Pública Española / Review of Public Economics*, **240**(1), 31–59.
- Trehan, Bharat, & Walsh, Carl E. 1988. Common trends, the government's budget constraint, and revenue smoothing. *Journal of Economic Dynamics and Control*, **12**(2-3), 425–444.
- Vaillancourt, François, & Bird, Richard M. 2007. The Interregional Incidence of Central Budgets in Federations: Some Evidence from Canada. *Public Budgeting & Finance*, **27**(1), 1–19.
- Vegh, Carlos A., & Vuletin, Guillermo. 2015. Unsticking the Flypaper Effect in an Uncertain World. *Journal of Public Economics*, **131**, 142–155.
- Vergne, Clémence. 2009. Democracy, elections and allocation of public expenditures in developing countries. *European Journal of Political Economy*, **25**(1), 63–77.
- Weingast, Barry R. 1995. The Economic Role of Political Institutions: Market-Preserving Federalism and Economic Development. *Journal of Law, Economics, & Organization*, **11**, 1–31.
- Weingast, Barry R. 2009. Second Generation Fiscal Federalism: The Implications of Fiscal Incentives. *Journal of Urban Economics*, **65**, 279–293.

- Wildasin, David E. 1989. Interjurisdictional capital mobility: Fiscal externality and a corrective subsidy. *Journal of Urban Economics*, **25**(2), 193–212.
- Zhuravskaya, Ekaterina V. 2000. Incentives to Provide Local Public Goods: Fiscal Federalism, Russian Style. *Journal of Public Economics*, **76**(3), 337–368.
- Zodrow, George R., & Mieszkowski, Peter. 1986. Pigou, Tiebout, property taxation, and the underprovision of local public goods. *Journal of Urban Economics*, **19**(3), 356–370.

## Appendix

### A1 Additional Tables and Figures

**Table A1:** Descriptive statistics for Argentine provinces. Demographic, economic, and fiscal variables. Average for the period 1988-2021

Province	% Population		Income (\$)	Population Density (inhab/km <sup>2</sup> )	Tax Revenues (\$)	Transfers (\$)	Spending (\$)
	(1)	(2)					
Buenos Aires	37.8	33.1	764,542.8	39.7	27,383.3	23,366.6	61,253.4
Catamarca	0.8	0.6	560,817.7	2.7	10,371.4	115,584.5	154,445.6
CABA	9.8	21.5	2,058,126.0	1.5	47,217.0	16,506.9	139,760.8
Chaco	3.1	1.0	336,545.6	10.0	10,374.7	66,259.5	93,675.1
Chubut	1.2	1.8	1,321,097.0	1.7	22,836.4	60,987.2	139,812.7
Cordoba	7.9	7.3	833,990.4	15.5	27,297.7	44,795.4	88,598.0
Corrientes	2.4	1.7	617,661.5	8.6	9,616.7	67,323.5	87,939.2
Entre Rios	3.2	2.8	732,098.4	13.2	21,354.1	59,302.6	93,091.9
Formosa	1.2	0.6	410,736.2	5.4	7,252.3	105,421.9	137,119.9
Jujuy	1.6	1.0	546,660.4	9.4	10,380.8	71,216.0	112,077.1
La Pampa	0.8	0.9	980,932.3	1.8	31,196.7	95,420.9	162,050.3
La Rioja	0.7	0.7	728,707.3	2.6	8,237.3	124,838.6	171,084.1
Mendoza	4.3	4.0	816,271.0	9.3	23,164.9	40,843.6	87,288.8
Misiones	2.4	1.1	388,571.0	26.1	13,454.0	53,147.8	83,083.6
Neuquen	1.1	2.1	1,471,116.0	3.9	34,651.4	68,268.9	206,930.1
Rio Negro	1.4	1.6	919,958.0	2.3	22,355.2	68,922.7	126,909.5
Salta	2.7	1.8	558,415.0	5.6	12,938.4	55,173.7	86,492.5
Santa Cruz	0.5	1.0	1,643,317.0	0.7	35,728.3	134,269.5	318,669.5
Santiago del Estero	2.2	1.0	377,761.6	5.1	8,165.9	72,756.8	90,009.8
San Juan	1.7	1.1	549,088.2	6.0	13,181.1	78,422.5	110,719.0
San Luis	0.9	1.4	1,150,993.0	4.0	21,223.2	90,606.8	115,628.3
Santa Fe	8.4	8.8	915,288.7	20.4	25,846.0	42,788.1	79,217.7
Tierra del Fuego	0.2	0.6	2,190,921.0	0.1	50,201.6	178,918.3	367,178.4
Tucuman	3.6	2.7	639,125.0	50.9	16,724.8	51,559.0	82,208.4
National Average			896,364.21	10.27	21,298.05	74,445.89	133,135.15

Source: Author's elaboration based on the sources detailed in Subsection 5.2. Notes: \$ donotes 2021 pesos.

**Table A2:** Panel unit-root tests. Argentine provinces. Period 1988-2021

	Pesaran (2007)	IPS (2003)	Individual ADF tests
	[1]	[2]	[3]
$G_t$	-0.319	-0.488	0%
$R_t$	0.666	-0.312	0%
$T_t$	-2.701***	-3.585***	17%
$S_t$	0.220	-7.4021***	8%
$D_t$	-2.205**	-5.625***	71%
$\Delta G_t$	-8.792***	-19.447***	75%
$\Delta R_t$	-8.020***	-19.150***	88%
$\Delta T_t$	-7.849***	-19.516***	96%
$\Delta S_t$	-9.998***	-26.932***	88%

*Source:* Author's elaboration. *Notes:* Column 1: Test statistics of Pesaran's CADF test with 2 lags. Column 2: Test statistics of Im-Pesaran-Shin panel test, where the number of lags has been chosen according to BIC criterion. Column 3:

Percentage of rejection of the null hypothesis for individual ADF tests applied to each one of the 24 provinces at a significance level of 5% (2 lags specified). In all cases, a time trend for variables in levels is included except for deficit.

Significance level \*  $p < 0.10$ , \*\*  $p < 0.05$ , \*\*\*  $p < 0.01$ , respectively.

**Table A3:** Specification tests for lag order reduction. Argentine provinces. Period 1988-2021

Cross-equation likelihood ratio test			
Lag order reduction $H_1 \rightarrow H_0$	2 $\rightarrow$ 1	3 $\rightarrow$ 2	4 $\rightarrow$ 3
Full-model $\chi^2(16)$	244.712***	342.476***	504.950***
Equation-by-equation likelihood ratio test			
Lag order reduction $H_1 \rightarrow H_0$	2 $\rightarrow$ 1	3 $\rightarrow$ 2	4 $\rightarrow$ 3
$G_t \chi^2(4)$	42.400***	61.876***	36.202***
$R_t \chi^2(4)$	37.232***	24.559***	46.475***
$T_t \chi^2(4)$	51.101***	109.561***	29.472***
$S_t \chi^2(4)$	25.819***	35.658***	5.256

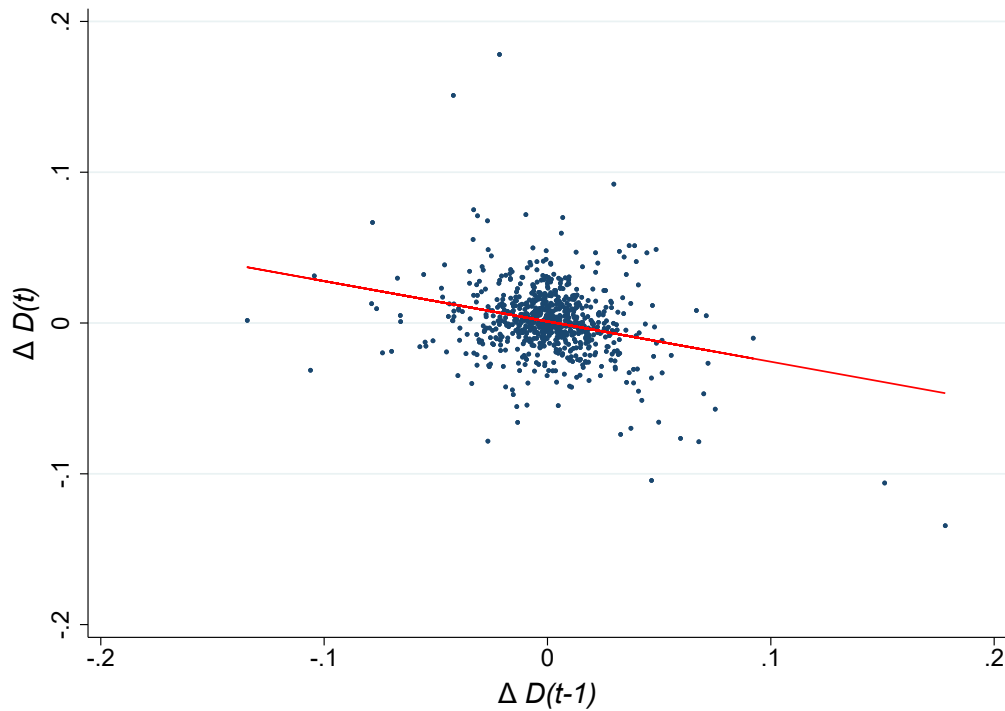
*Source:* Author's elaboration.

**Table A4:** Specification tests for provincial-fixed effects. Argentine provinces. Period 1988-2021

Cross-equation likelihood ratio test			
Lag order	2	3	4
Full model $\chi^2(96)$	82.842	87.799	124.250**
Equation-by-equation likelihood ratio test			
Lag order	2	3	4
$G_t \chi^2(24)$	42.865**	35.694*	69.804***
$R_t \chi^2(24)$	15.354	15.825	27.550
$T_t \chi^2(24)$	2.960	3.811	14.298
$S_t \chi^2(24)$	4.746	5.301	6.798

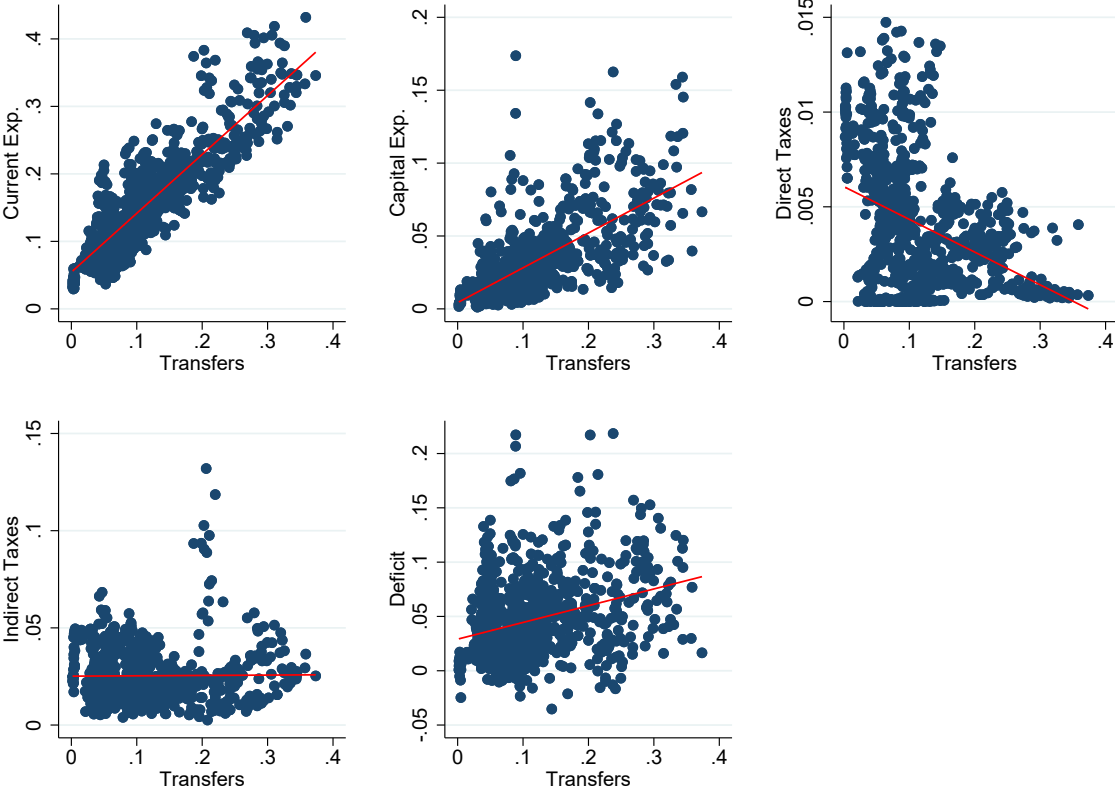
Source: Author's elaboration.

**Figure A1:** Changes in deficit. Argentine provinces. Period 1988-2021



Source: Author's elaboration. Notes:  $\Delta$  Deficit in  $t - 1$  and  $t$  expressed in terms of provincial GGP.

**Figure A2:** Correlations with the level of transfers. Argentine provinces. Period 1988-2021



*Source:* Author’s elaboration. *Notes:* Correlations with the level of transfers. All fiscal variables are expressed in terms of provincial GGP.

## A2 Methodology of Impulse Response Analysis

For the sake of simplicity, take the case where we have a model that includes only one lag. By making use of the fact that  $D_t = b'Y_t = b'\Delta Y_t + D_{t-1}$ , we can perform recursive substitution on the system and express the changes in variables (in differences) in response to shocks as  $\frac{\partial \Delta Y_{t+h}}{\partial \epsilon_t}$ , which (abusing notation) represents a 4x4 matrix where the element located in its  $m$ -th column and  $n$ -th row represents the total derivative of the first difference of the  $n$ -th variable of vector  $Y$  at time  $t+h$  in response to a one-unit change in the  $m$ -th variable of vector  $Y$  at time  $t$ . We can compute an explicit solution for these changes as follows:

$$\frac{\partial \Delta Y_{t+1}}{\partial \epsilon_t} = A_1 + \gamma b' \quad (15)$$

$$\frac{\partial \Delta Y_{t+2}}{\partial \epsilon_t} = \frac{\partial \Delta Y_{t+1}}{\partial \epsilon_t} (A_1 + \gamma b') + \gamma b' \quad (16)$$

$$\frac{\partial \Delta Y_{t+h}}{\partial \epsilon_t} = \frac{\partial \Delta Y_{t+h-1}}{\partial \epsilon_t} (A_1 + \gamma b') + \gamma b' + \sum_{j=2}^{h-1} \frac{\partial \Delta Y_{t+h-j}}{\partial \epsilon_t} \gamma b' \quad \text{for } h > 2 \quad (17)$$

Obtaining the responses of the variables in levels is a straightforward task, as to obtain the responses in levels we only need to sum the responses in differences. That is, we could define the matrix  $\frac{\partial Y_{t+h}}{\partial \epsilon_t}$  as the sum of matrices:

$$\frac{\partial Y_{t+h}}{\partial \epsilon_t} = \sum_{j=0}^h \frac{\partial \Delta Y_{t+h-j}}{\partial \epsilon_t} \quad (18)$$

Let  $v_m$  be a 0-1 column vector with zeros everywhere except for the  $m$ -th row. Then, the responses on all four variables  $h$  periods ahead of the shock of variable  $m$  of vector  $Y$  could be computed as  $(\frac{\partial Y_{t+h}}{\partial \epsilon_t})v_m$ , which would give us a vector in which the  $i$ -th element represents the change in the  $i$ -th variable of vector  $Y$ . Obviously, its  $m$ -th element represents the response of the variable with suffered the shock on itself. As variables in  $Y$  are supposed to be unit-root series, there is no guarantee that impulse-response functions of variables in levels will converge to zero as time progresses. More likely, the effect of a contemporaneous shock in one variable will have permanent effects. However, as there is a correction mechanism, the effect on the deficit should vanish after a certain period. That is,  $\lim_{h \rightarrow \infty} b' \frac{\partial Y_{t+h}}{\partial \epsilon_t} v_m = 0$ , which is the same as saying that  $\sum_{h=1}^{\infty} b' \frac{\partial \Delta Y_{t+h}}{\partial \epsilon_t} v_m$  should equal 1 or -1, depending on which variable was shocked. The theoretical implication of the transversality condition is somewhat more relaxed, and it establishes that  $\sum_{h=1}^{\infty} b' \frac{1}{(1+r)^h} \frac{\partial \Delta Y_{t+h}^*}{\partial \epsilon_t} v_m$ , the discounted sum of the changes in differences (this time not considering responses in  $S_t$ ), should be equal to 1 or -1.

It is important to remark that these are non-orthogonalized impulse response functions, as we have yet to address the issue of causal identification.